

## Printing from the Application

PosterJet® 7

### Printing from the Application

Not every large format print requires the full range of functionality of PosterJet® - often jobs are standard prints such as flowcharts and organigrams, which do not need further editing by PosterJet®. In this case it can be easier to simply print from an application without first saving the file and then having to switch to PosterJet®.

For this purpose, PosterJet® offers access to the most important RIP functions via so-called PPD files (PostScript Printer Description). These PPDs are selected from Photoshop or MS Project as per a printer and can be accessed via the extended print options on PosterJet® functions.

In this way you can scale a flowchart to DIN A3 with little effort and send the print job to PosterJet®. Here it is added to the print queue and is “added” to the PosterJet® defaults.

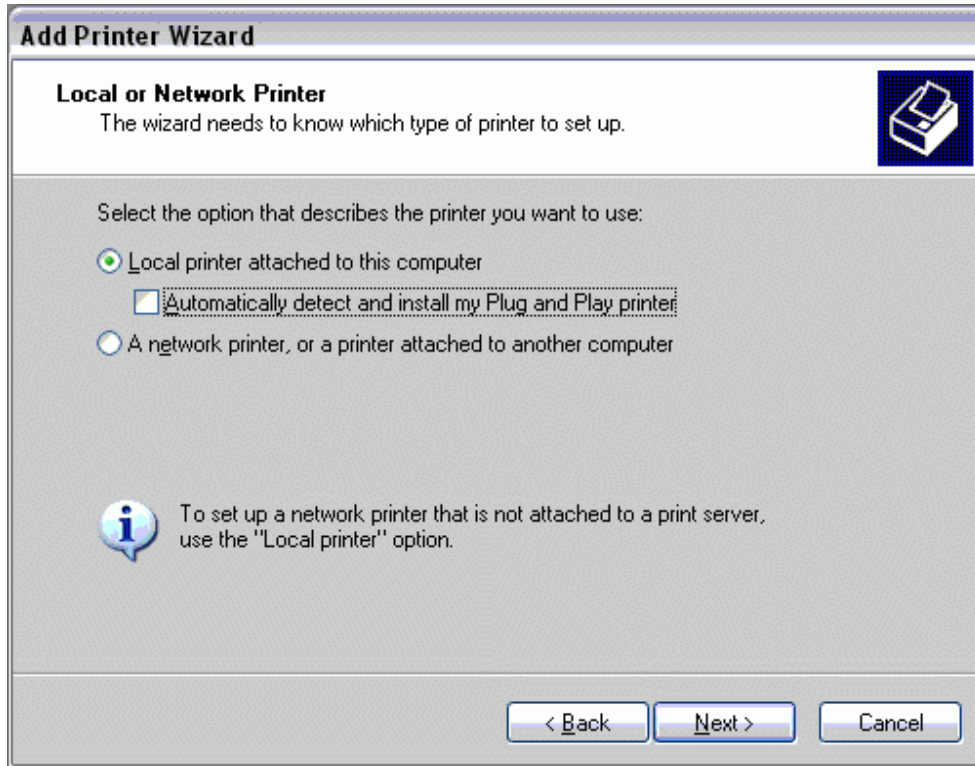
- [This is how to install PPD files on the server](#)
- [This is how to print directly from an application via PosterJet®](#)
- [This is how to edit the print job in the application](#)
- [This is how to print from computers in the network via PosterJet®](#)

#### **This is how to install PPD files on the server**

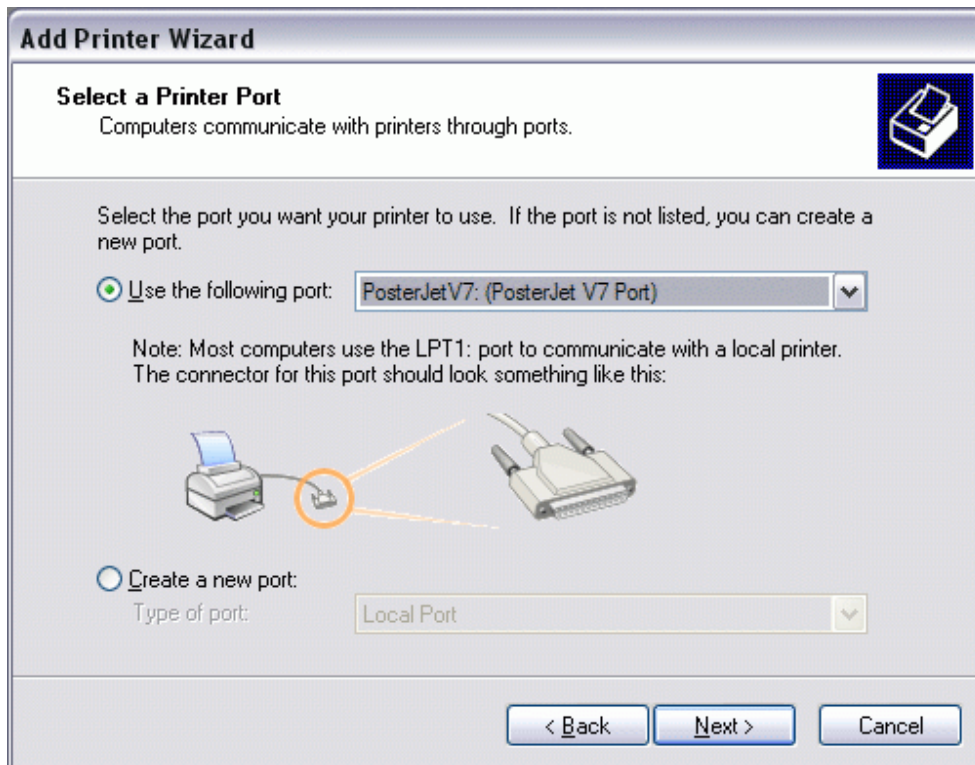
On Windows operating systems, this takes place by setting up the Windows print driver. To do this, access the Windows assistant for installation and setup of the printer.

Installation is very similar for all the latest Windows versions, for example, here, you will find the installation under Windows XP Professional.

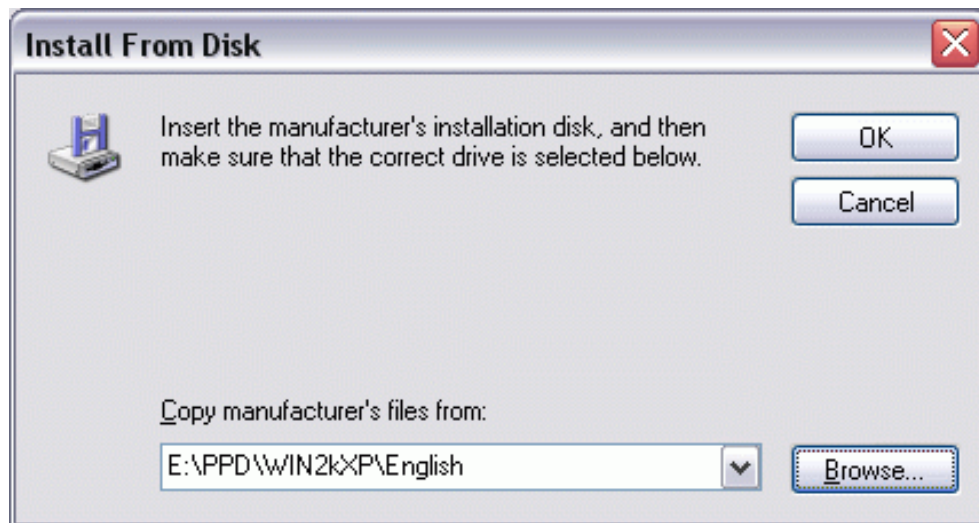
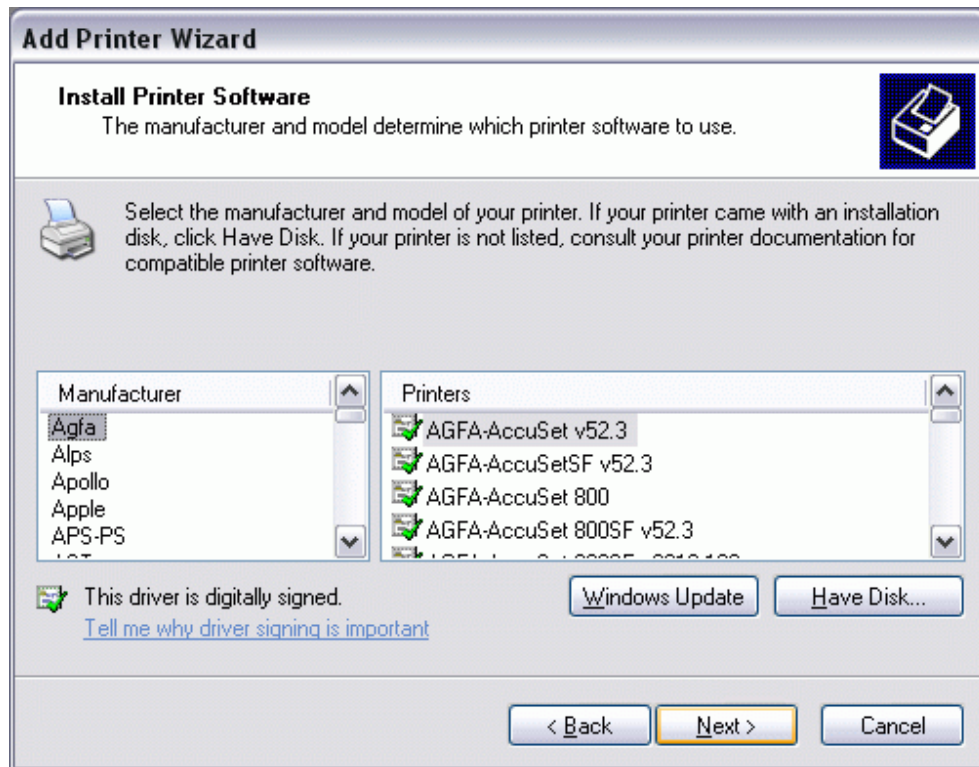
Then click on Start/Settings/Printer and fax devices. Via “Add Printer”, start the assistant and select the “Local Printer” option; deactivate the automatic search for plug and play printers.

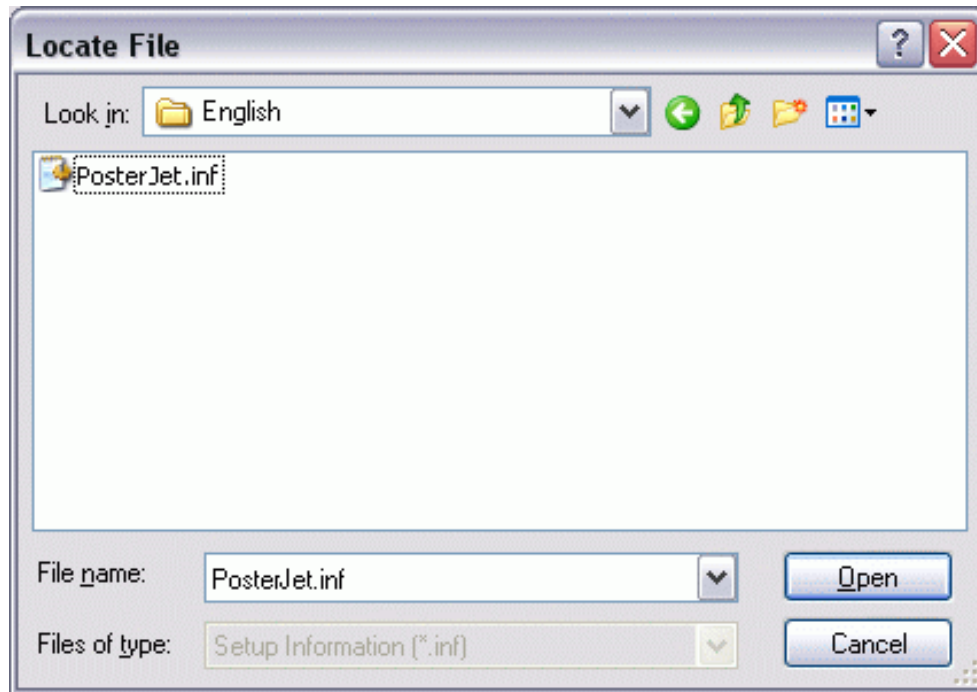


For the next query on the printer connection, select the PosterJet® connection (PosterJet® Port).

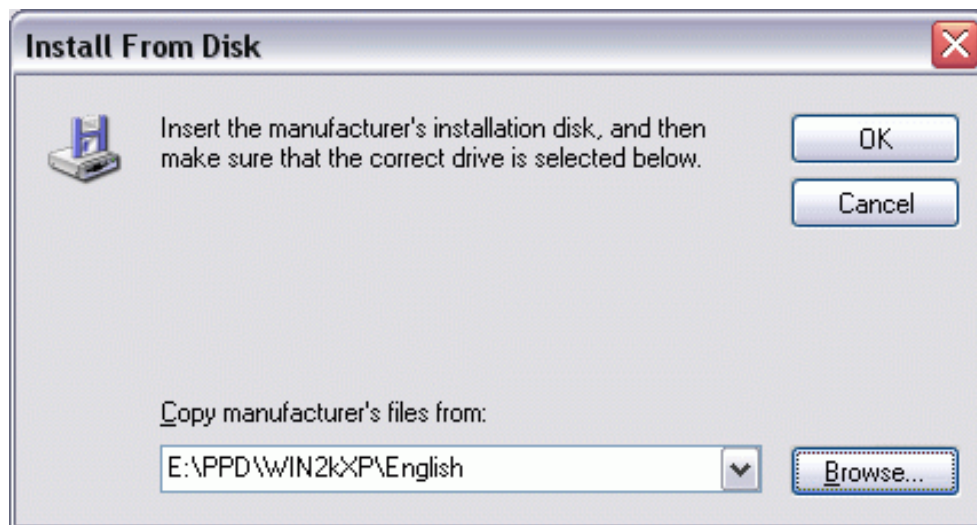


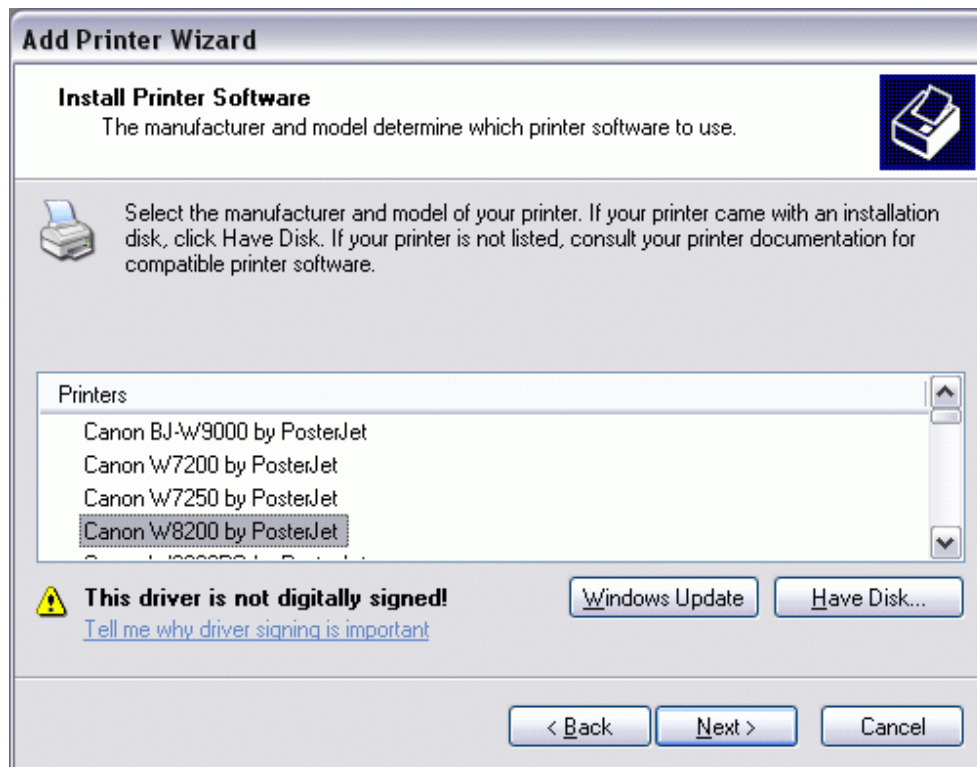
In the "Install Printer Software" dialog, select the PosterJet® CD from "Data Media". From the PPD directory, click on your operating system and the language required and then you will come to the PosterJet®.inf. file.





Confirm the following "Installation of Data Media" dialog and a selection list of available printers will appear. Here, select the model required and confirm with "Continue".






In the next window, you can set the name for the printer and, in some Windows versions, can decide whether it should function as a standard printer. It is recommended to set the large format printer as the system standard only if the computer will only be used exclusively for PosterJet®; otherwise a mistaken mouse click on "Print" can lead to the loss of materials and toner.

**Add Printer Wizard**

**Name Your Printer**  
You must assign a name to this printer.



Type a name for this printer. Because some programs do not support printer and server name combinations of more than 31 characters, it is best to keep the name as short as possible.

Printer name:

Do you want to use this printer as the default printer?


Yes  
 No

< Back   Next >   Cancel

In the next step you will decide how the printer should be enabled in the network. If you are planning to print from applications from other computers in the network, enter an authorization name.

**Add Printer Wizard**

**Printer Sharing**  
You can share this printer with other network users.

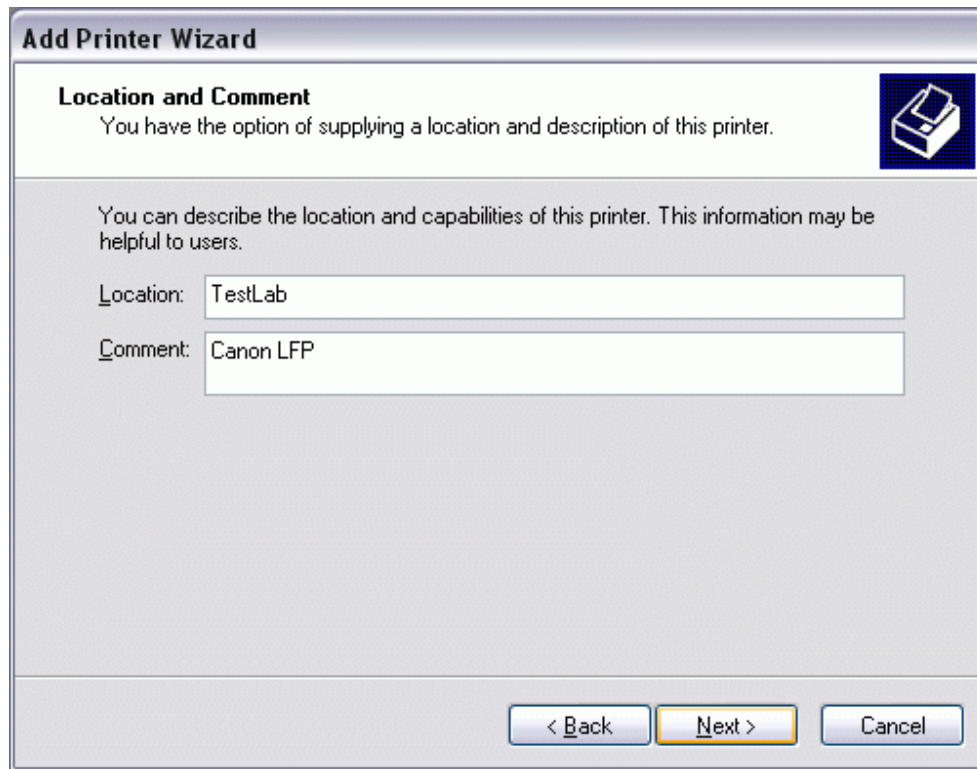


If you want to share this printer, you must provide a share name. You can use the suggested name or type a new one. The share name will be visible to other network users.

Do not share this printer  
 Share name:

< Back   Next >   Cancel

If you have selected the authorization, a dialog box will appear in which you can specify the location of the printer and add a comment.



**Add Printer Wizard**

**Location and Comment**  
You have the option of supplying a location and description of this printer.

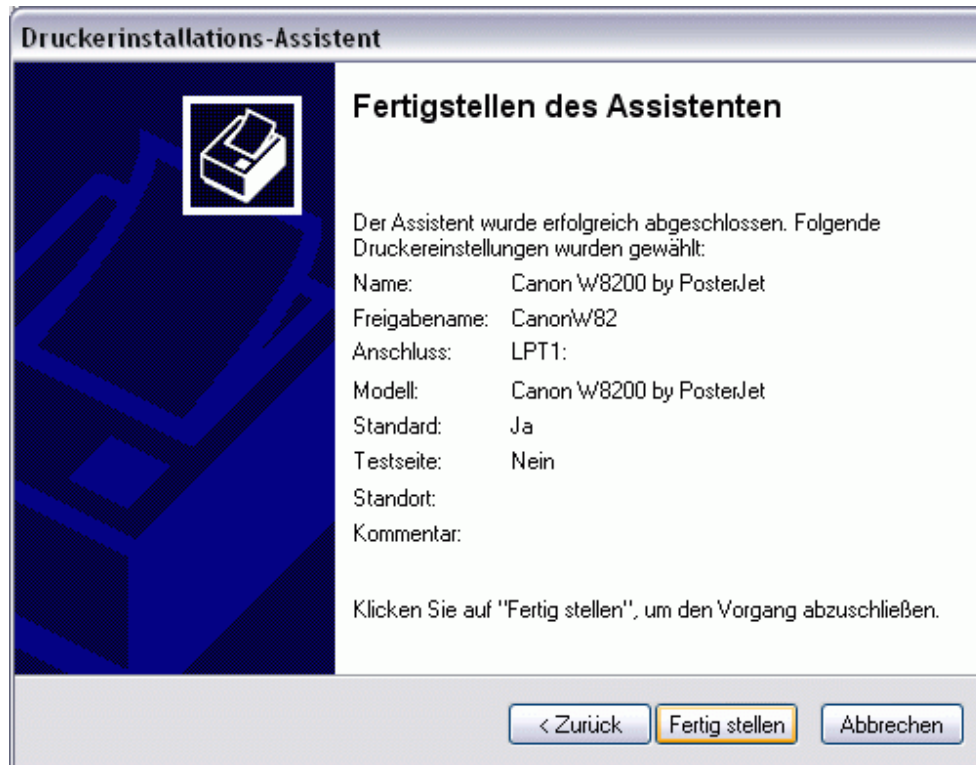
You can describe the location and capabilities of this printer. This information may be helpful to users.

Location:

Comment:

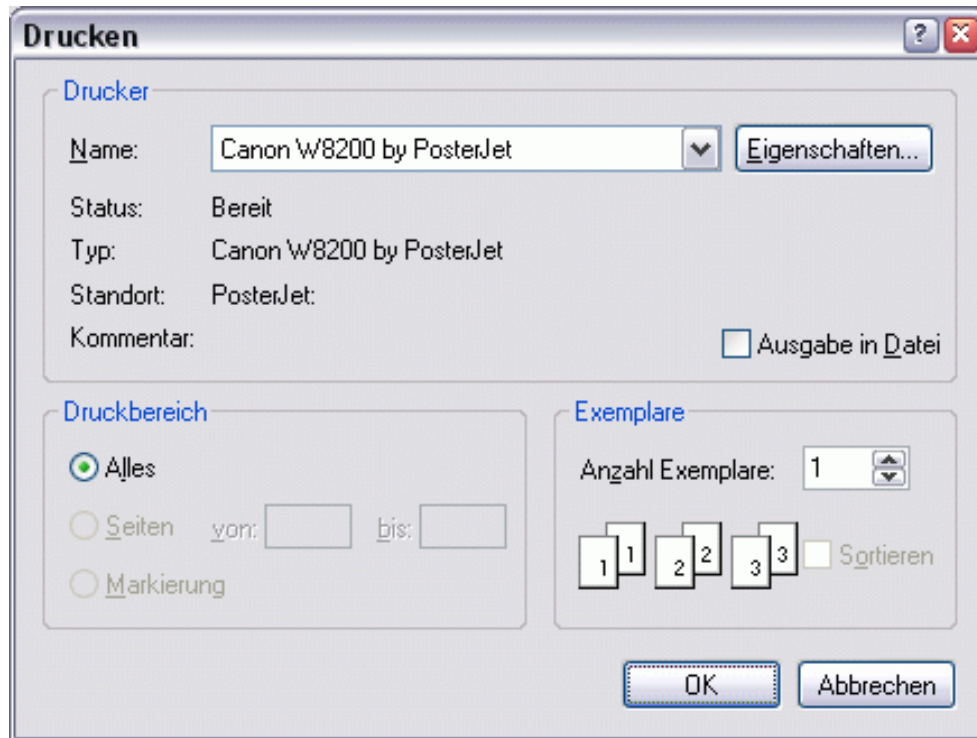
< Back   Next >   Cancel

Initially deselect a test page printout and allow the assistant to do its work with "Prepare".



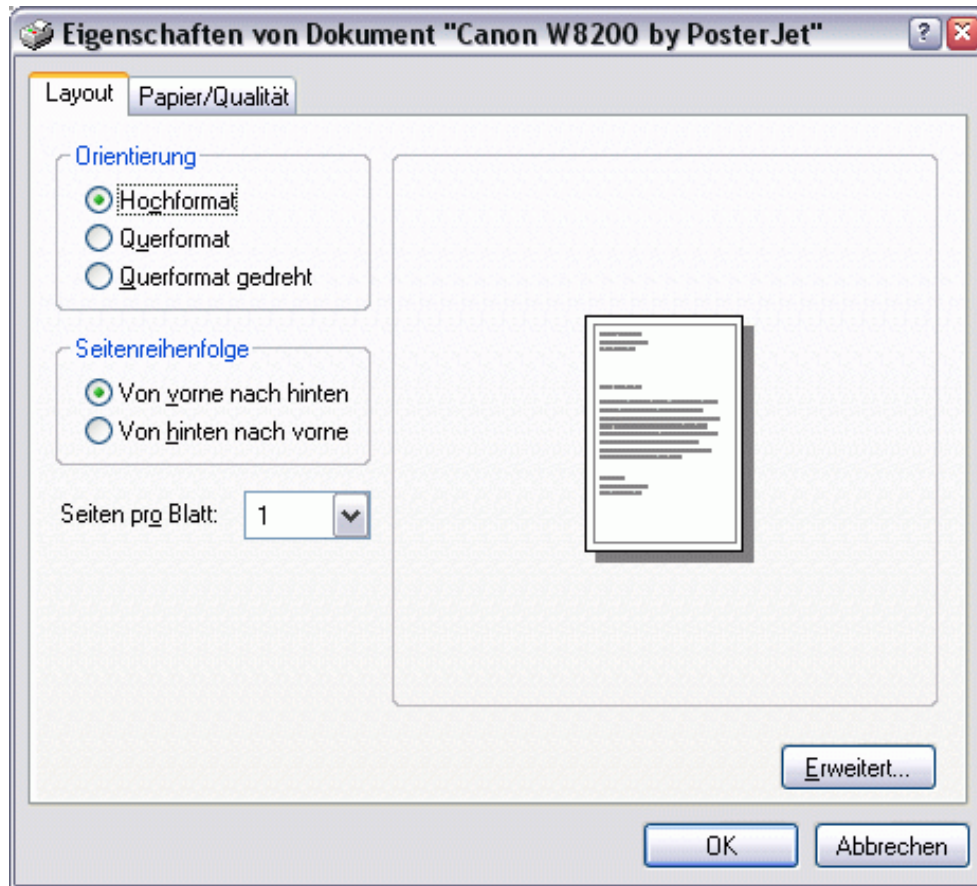
### **This is how to print from the application**

Once installed, the PPDs are available to every application in the system. It is sufficient, when printing from the application, to select the corresponding PosterJet® printer, in order to send the print job to PosterJet®. Here, the print job is ranked in the print queue and can be fully edited using all PosterJet® functions.

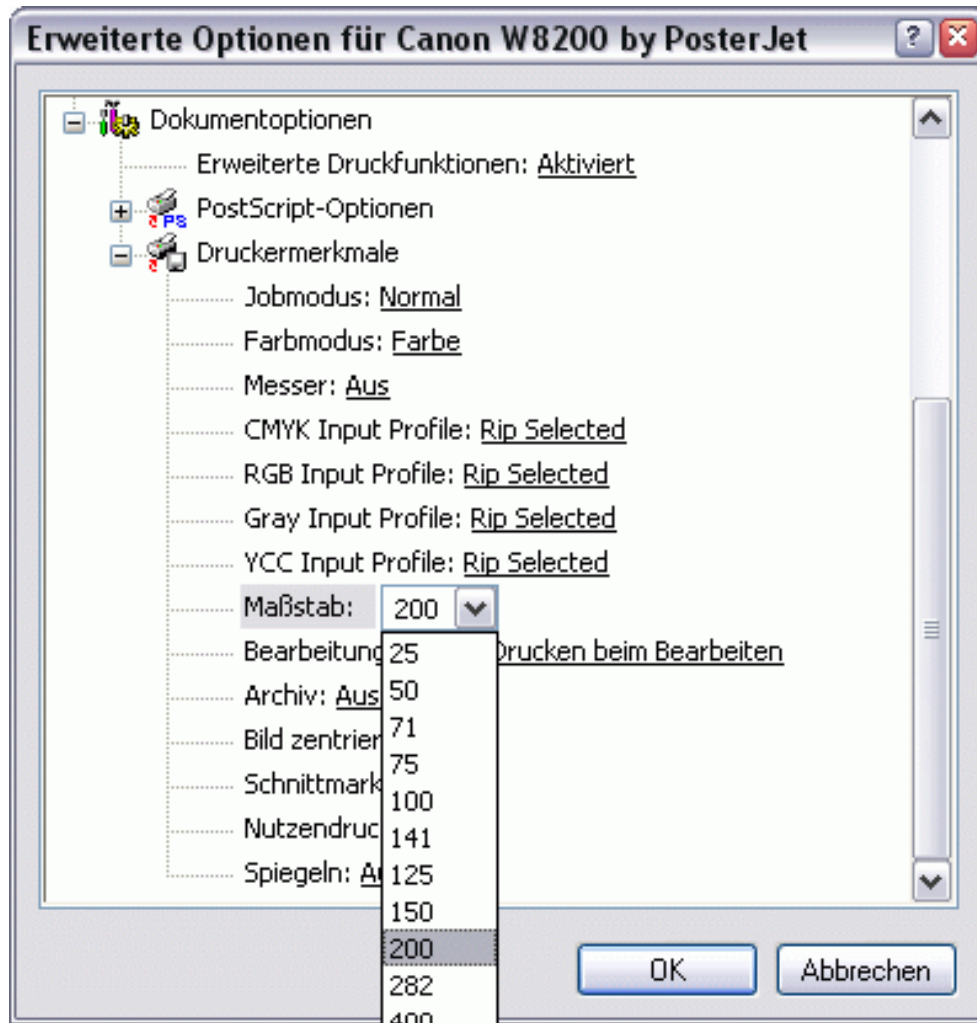


### This is how to edit the print job in the application

In addition, the PPDs also offer access to the basic PosterJet® functions, so that, for a number of settings, no further editing is required in PosterJet®. Here, in printer selection, go to "Properties" and then to "Extended" and then to the "Extended Options for PrinterXY by PosterJet®".



In addition to the usual printer driver setting, such as paper size and number of copies, you can also control the PosterJet® functions under "Printer Features". By clicking on the underlined area of an entry, a drop-down menu will appear showing the relevant possible values. Here, you can set the scaling, the use of the cropping tool or the cropping marks.



Confirm your settings and then return to the “Print” dialog box. By clicking on “OK”, you will transmit the job to PosterJet®. According to whether the print queue is active or not, the job is assessed immediately and sent to the printer. Naturally you can also open the job in PosterJet® and make further settings, for example, to color management. However, in this case the print queue should be paused – otherwise the print will start to run before you can switch to PosterJet®. In the meantime, it could happen that an application has options similar to PosterJet®. In such a case, avoid using both options – this could lead to unexpected results.

**PosterJet® uses the following values if a print job has been sent from an application:**

- Default values will be used for the color management settings. The default values depend on the user settings in the "Color" tab of the submission window.
- PosterJet automatically chooses the correct ICC output profile for the selected media. Selected media means the media that was set in the PosterJet Server.

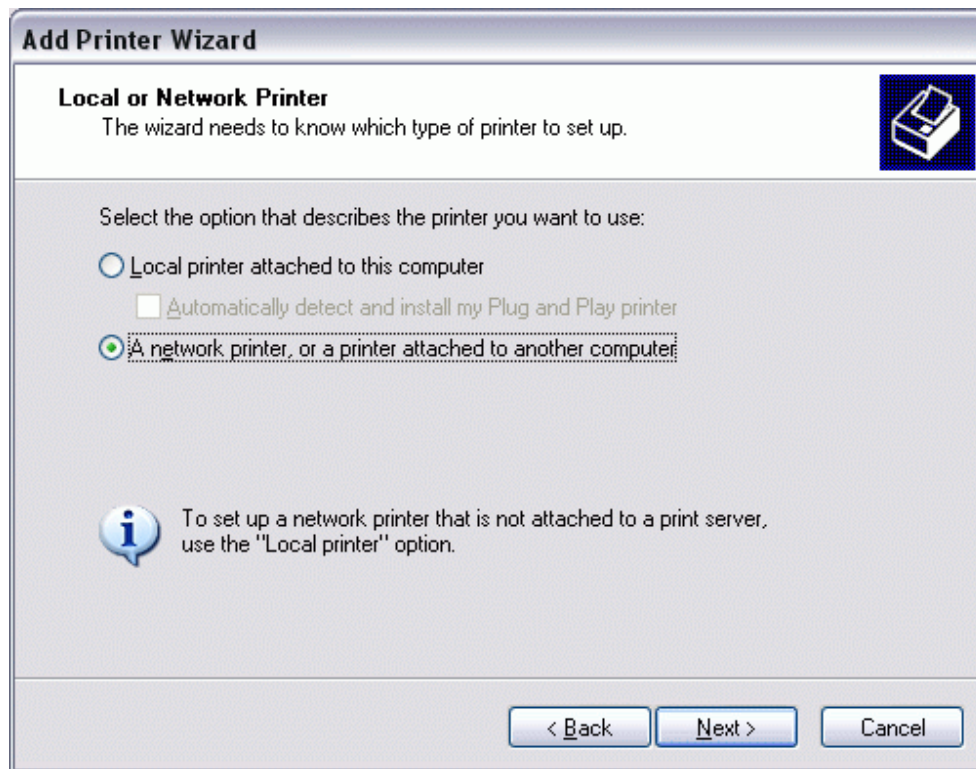
**This is how to print from computers in the network via PosterJet®**

Printing directly from the application is also possible in the network – even computers on which PosterJet is not installed can use PPD files to “feed” PosterJet® (that is installed on another computer

in the network).

To do this – at least under Windows – the printer must be installed on the PosterJet computer (server) and enabled for the network print. You can access the printer features from the Start menu, via Settings – Printer and then right click on the printer icon.

On the computer without PosterJet from which you wish to print, simply install the PosterJet printer as a network printer. The following describes how to install under Windows XP Professional. Here, start the printer installation assistant from Start/Settings/Printer and fax devices. Using “Add Printer”, start the assistant and select the option “Network Printer”.



In the next step, look for the printer in the network. Mark the corresponding network and list the available printers. Then select the printer you required with “by PosterJet®” – here, the printer is the “Canon W8200 by PosterJet®”. Confirm with “OK” and close the assistant with “Prepare”.

The PosterJet® “printer” is now installed on the computer and all applications are available. To print from the application, proceed as per the preceding section. Take particular care when printing via the network that PosterJet® is started on the “server” so that the job can be accepted and sent to the print queue.

## Add Printer Wizard

### Specify a Printer

If you don't know the name or address of the printer, you can search for a printer that meets your needs.



What printer do you want to connect to?

Find a printer in the directory.

Connect to this printer (or to browse for a printer, select this option and click Next):

Name:

Example: \\server\printer

Connect to a printer on the Internet or on a home or office network:

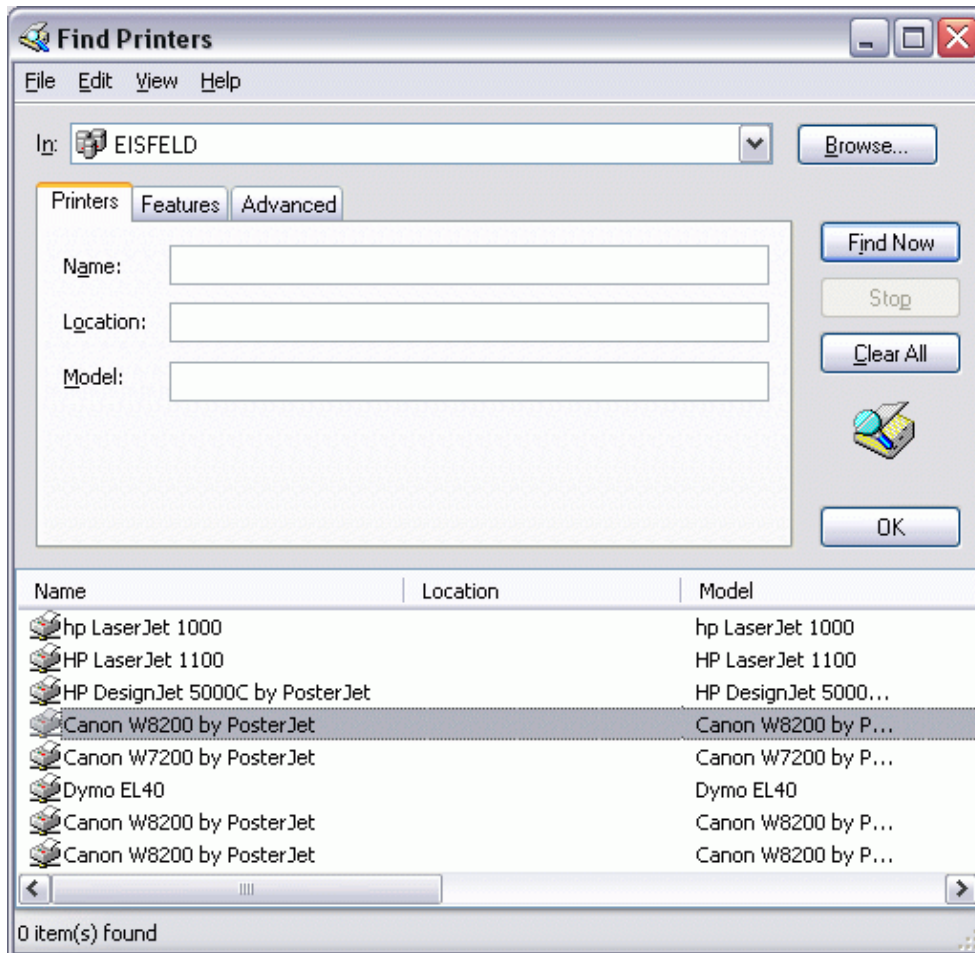
URL:

Example: http://server/printers/myprinter/.printer

< Back

Next >

Cancel



## Druckerinstallations-Assistent



### Fertigstellen des Assistenten

Der Assistent wurde erfolgreich abgeschlossen. Folgende Einstellungen wurden gewählt:

Name: Canon W8200 by PosterJet an asus5

Standard: Nein

Standort:

Kommentar:

Klicken Sie auf "Fertig stellen", um den Vorgang abzuschließen.

< Zurück

Fertig stellen

Abbrechen