

## Settings for printing from application with limited user rights

# PosterJet® 7

### Security settings under Windows

If you do not obtain the necessary permissions, you may have problems during printing from application. To print properly from applications some settings have to be performed. These settings can only be done by the administrator of the respective computer.

Please make sure that you are logged as administrator (full access) on the computer that runs the PosterJet 7 server before you start working on the security settings.

#### Important

This support document examines exclusively common settings of Microsoft Windows. It is highly recommended that you are familiar to the handling of permissions, restrictions and security settings under Windows.

### Security settings in the registry

Necessary effective permissions for the following registry key

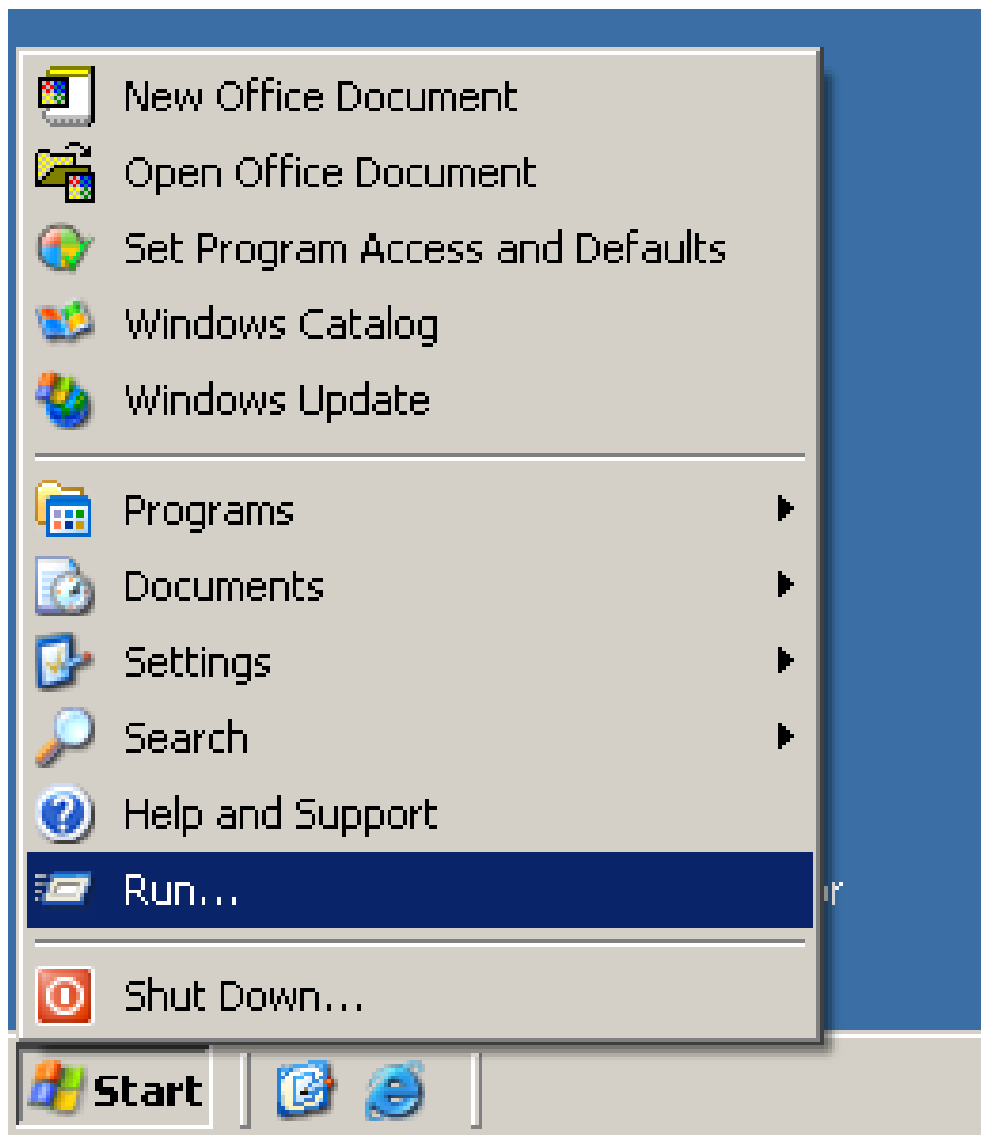
My Computer\HKEY\_LOCAL\_MACHINE\SOFTWARE\Eisfeld Datentechnik\Spooler

- Query Value
- Set Value
- Create Subkey
- Enumerate Subkeys
- Notify
- Delete
- Read Control

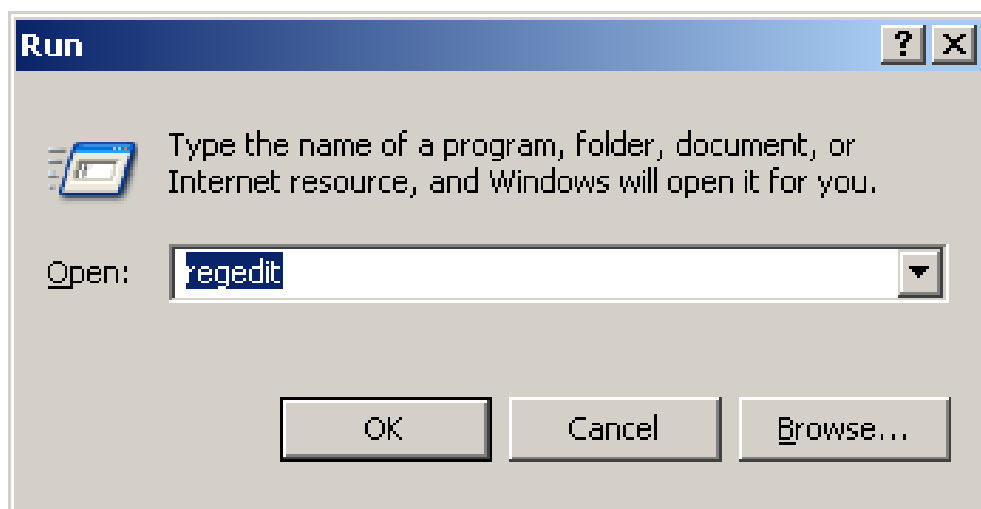
The above-named permissions correspond to the Windows user group "Power Users".

#### Checking the security settings in the registry

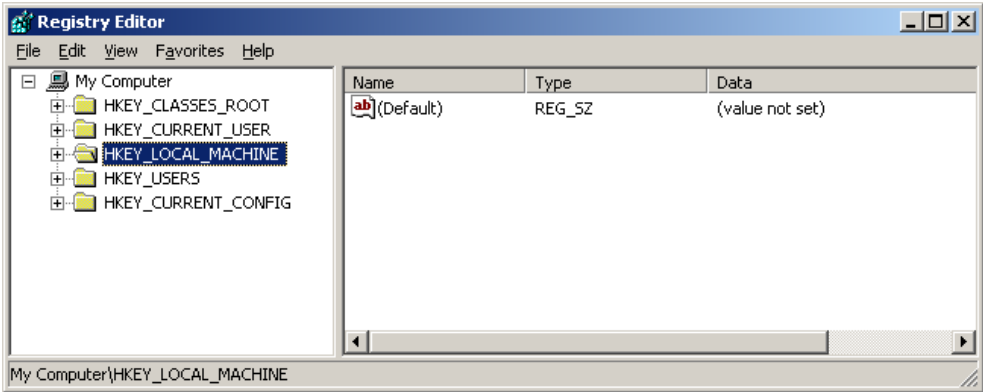
Log in as administrator on the computer on which the PosterJet Server is installed. From the Windows start menu choose the entry "Run...".



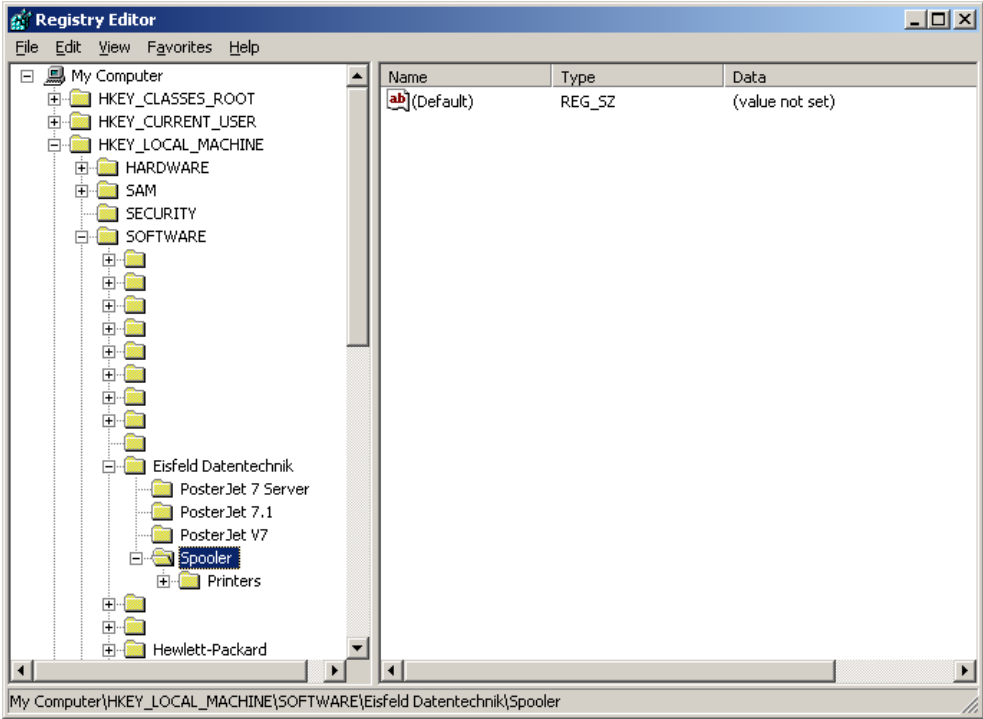
Enter "regedit" and click the OK button.



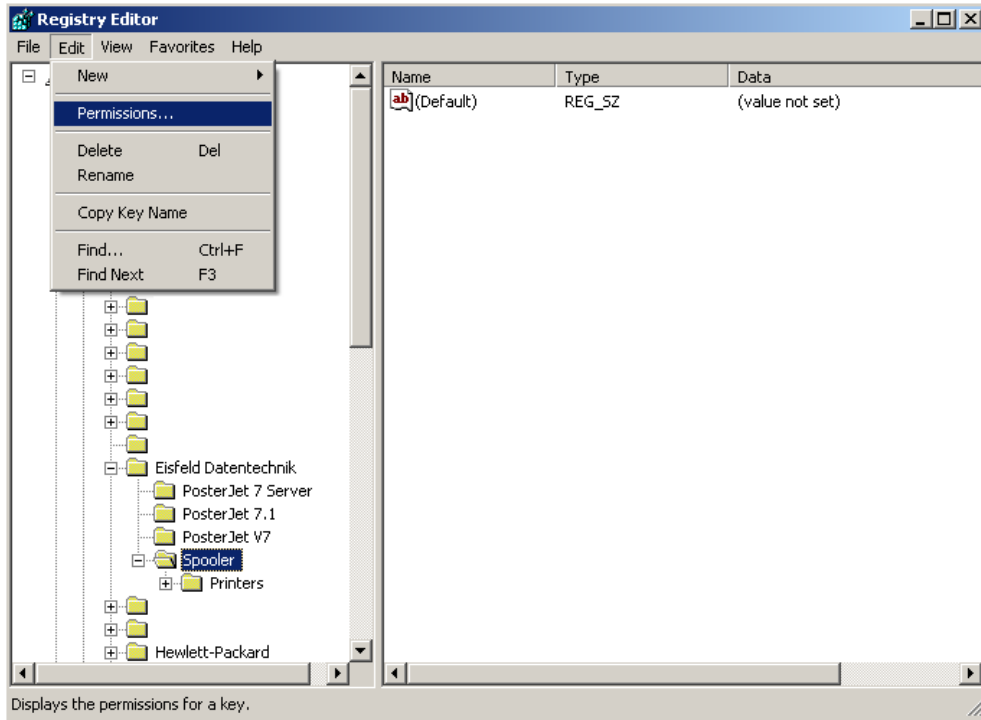
The registry editor appears.



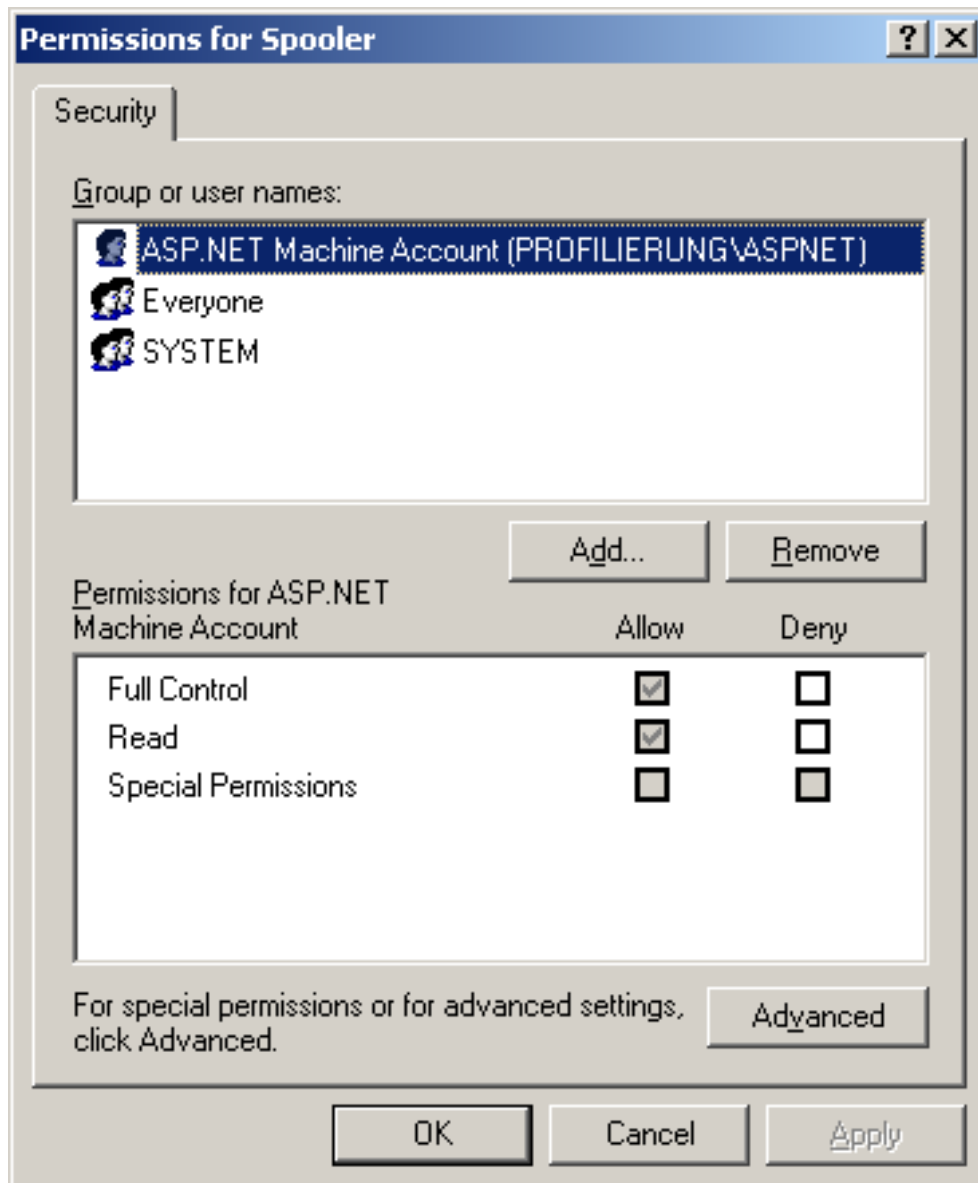
Select the entry "My Computer \ HKEY\_LOCAL\_MACHINE \ SOFTWARE \ Eisfeld Datentechnik \ Spooler".



Select the entry "Permissions..." from the Edit menu.

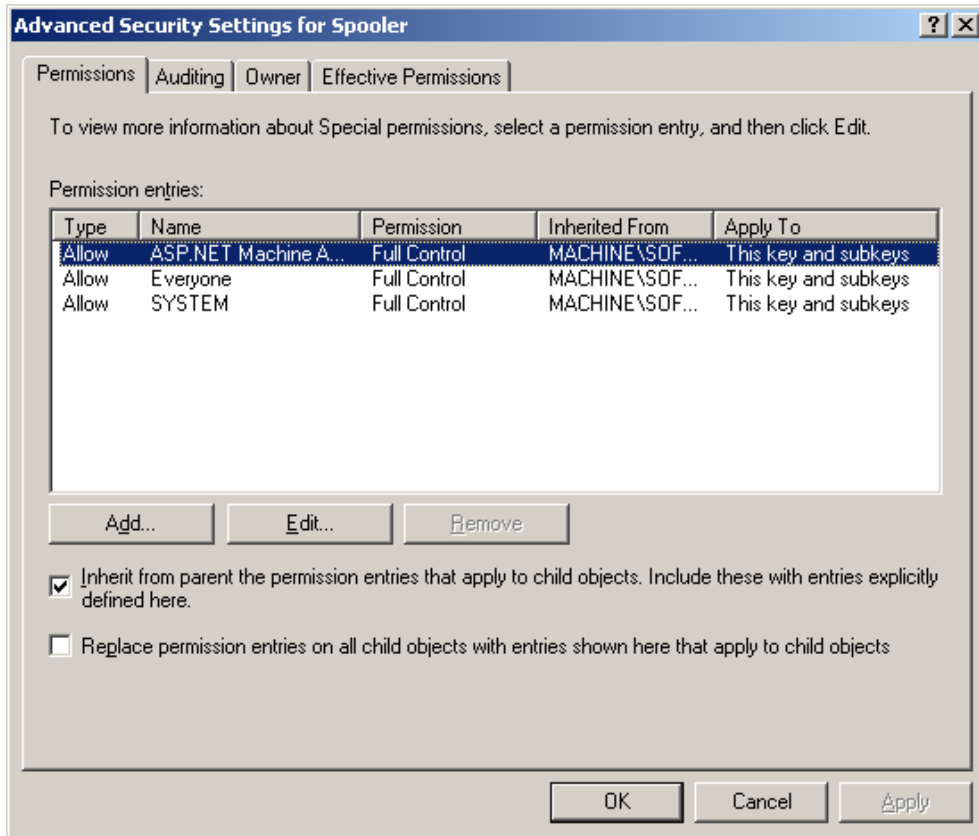


The window "Permissions for Spooler" appears.

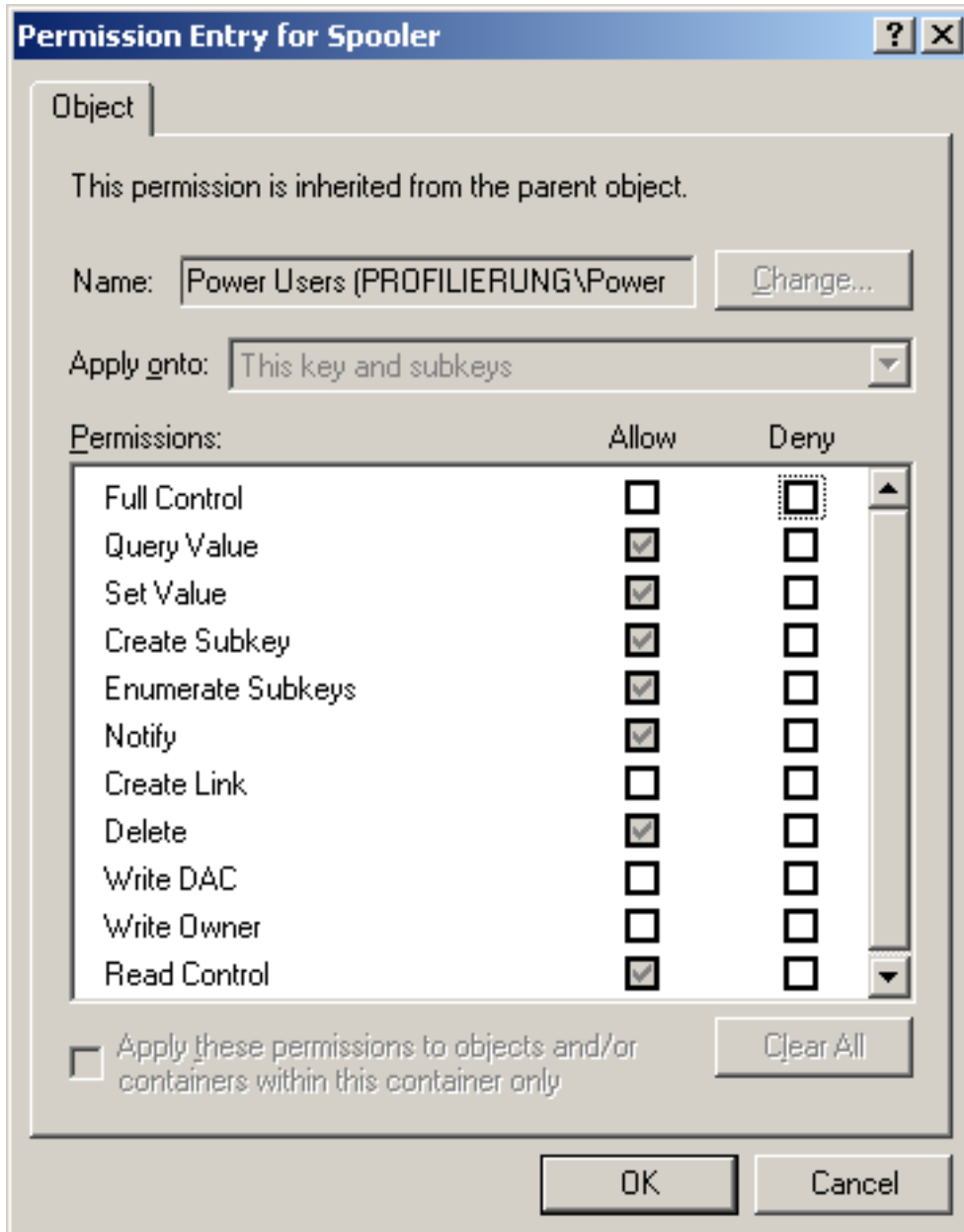


Click on the "Advanced" button.

Double click on the desired user.



The window "Permission Entry for Spooler" appears.



In this example the user "PROFILIERUNG" from the user group "Power Users" obtains the necessary permissions.

If the desired user does not obtain the necessary permissions, you must assign these permissions to the user.

## Security settings for the Spool folder

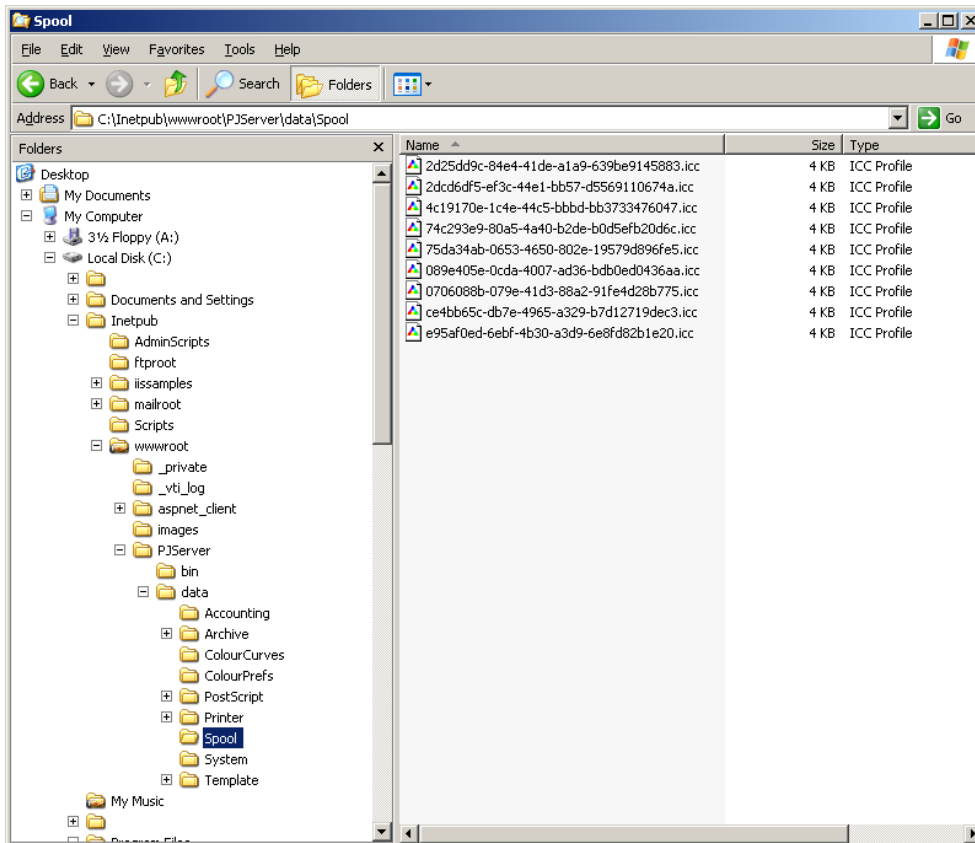
Necessary effective permissions for the Spool folder

- Traverse Folder / Execute File
- List Folder / Read Data
- Read Attributes
- Read Extended Attributes
- Create File / Write Data

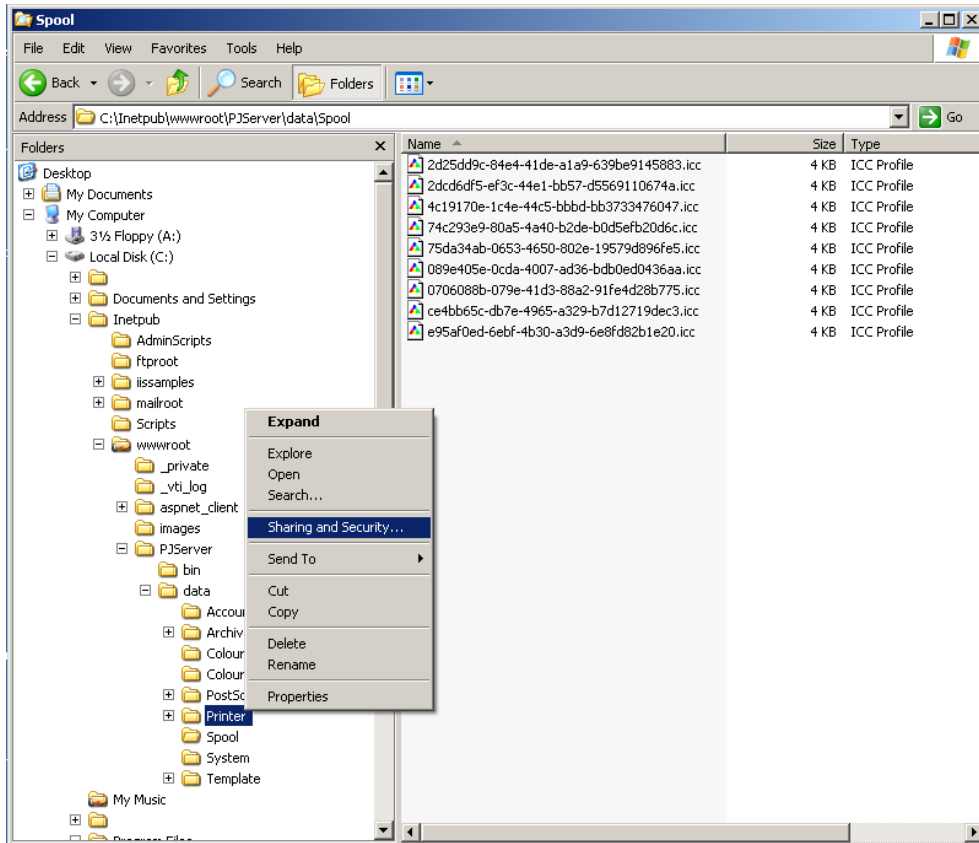
- Create Folders / Append Data
- Write Attributes
- Write Extended Attributes
- Delete
- Read Permissions

### Checking the permissions for the Spool folder

Start the Windows Explorer.

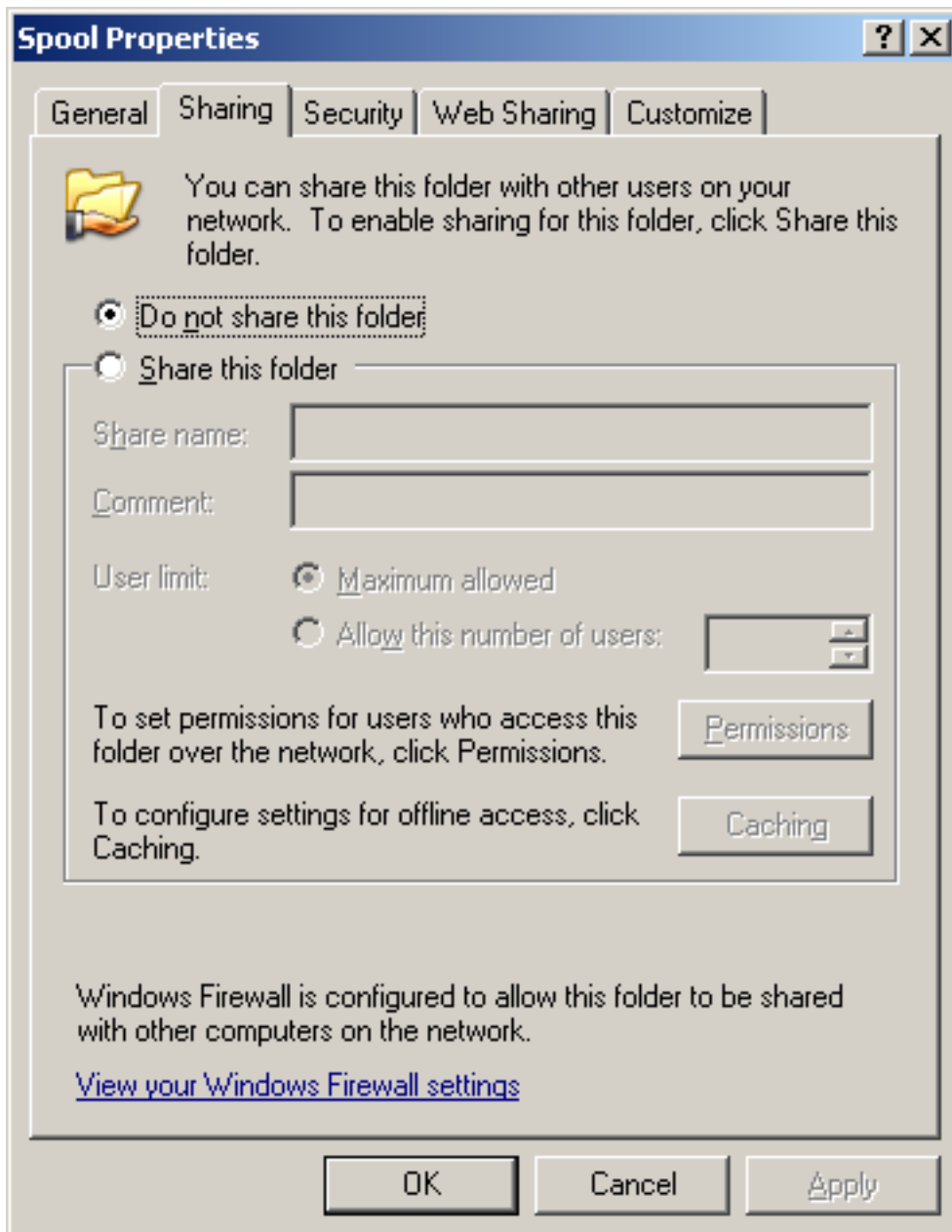


Navigate to the Spool folder and click on it with the right mouse button.

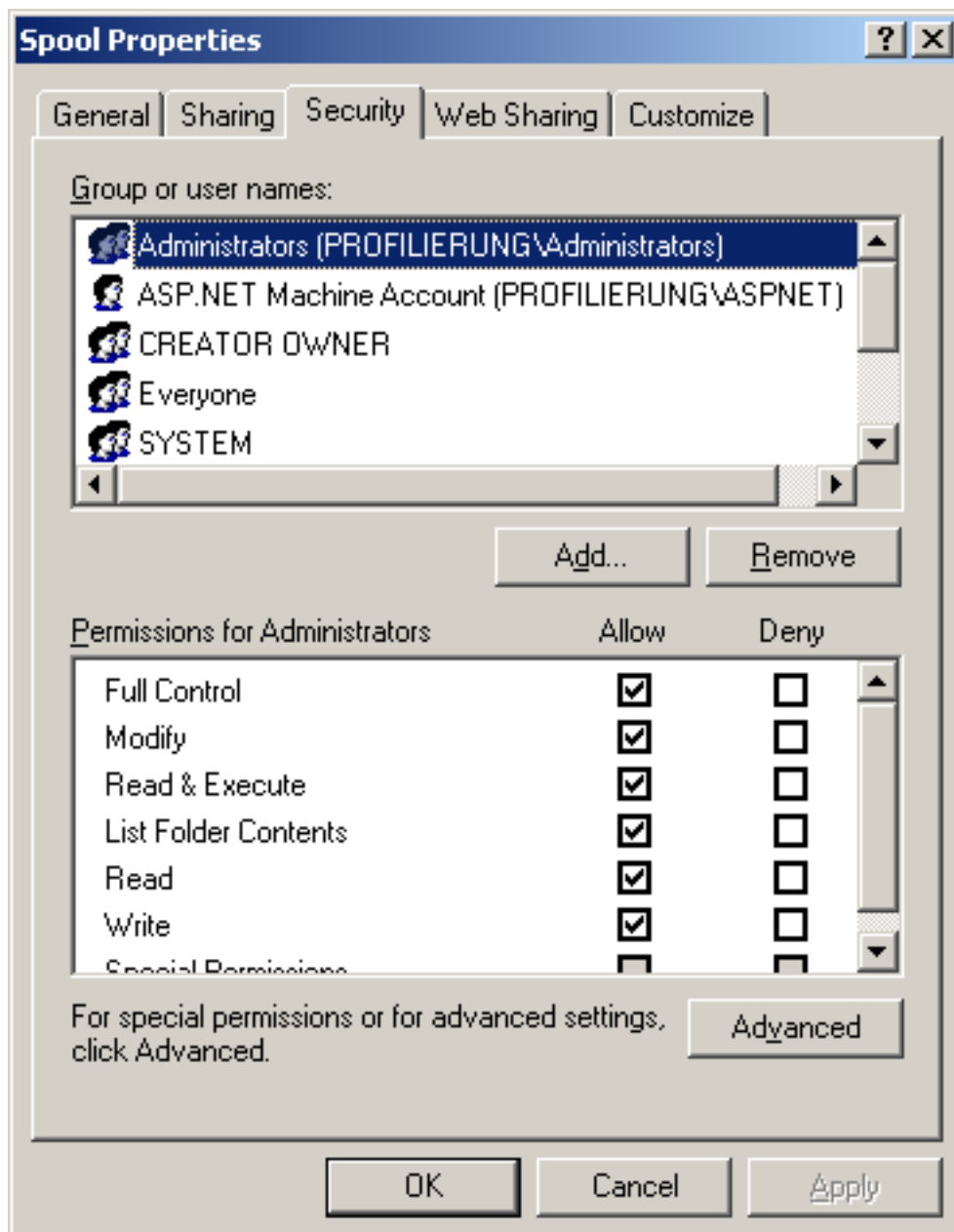


Choose the entry "Sharing and Security...".

The window "Spool Properties" appears.



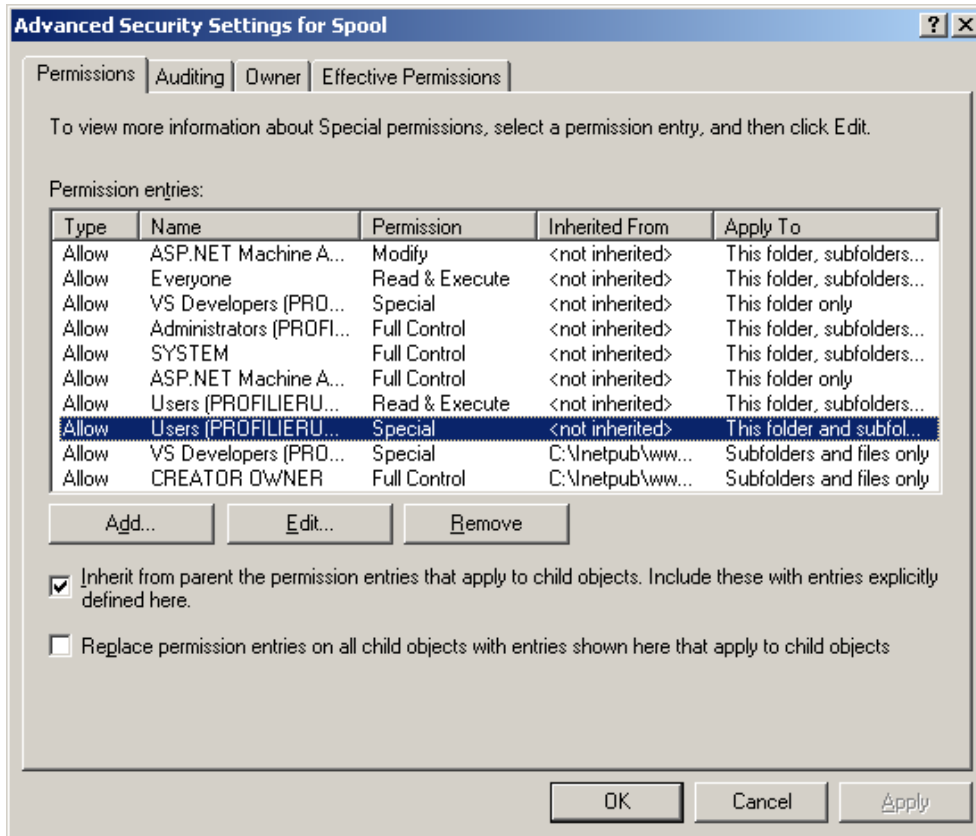
Click on the tab "Security".



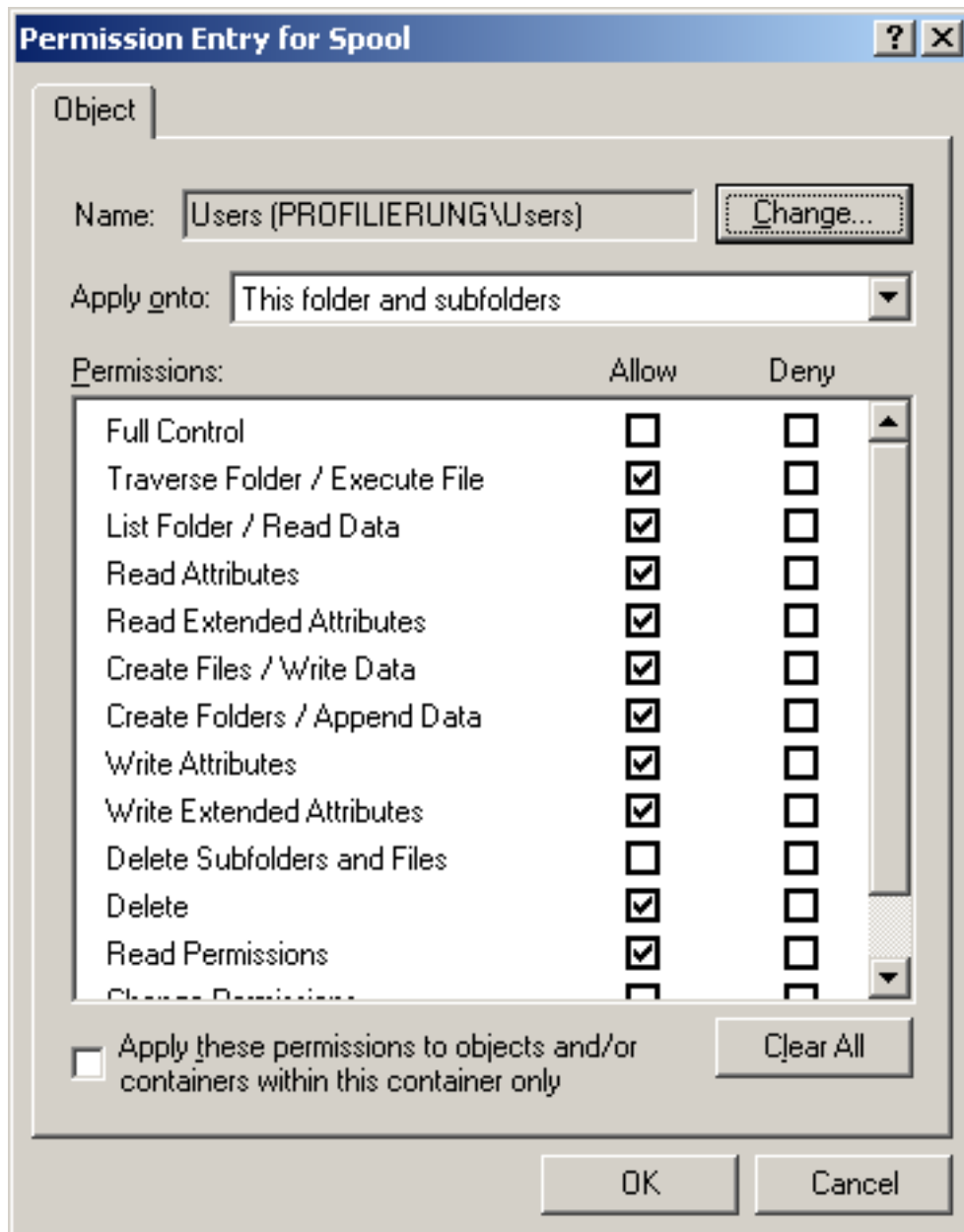
Click on the "Advanced" button.

The window "Advanced Security settings for Spool" appears.

Double click on the desired user.



The window "Permission entry for Spool" appears.



In this example the user obtains the necessary permissions.

If the desired user does not obtain the necessary permissions, you must assign these permissions to the user.

## Permissions for the shared printers

Please make sure, that all printers that should be accessible in the network are properly shared.

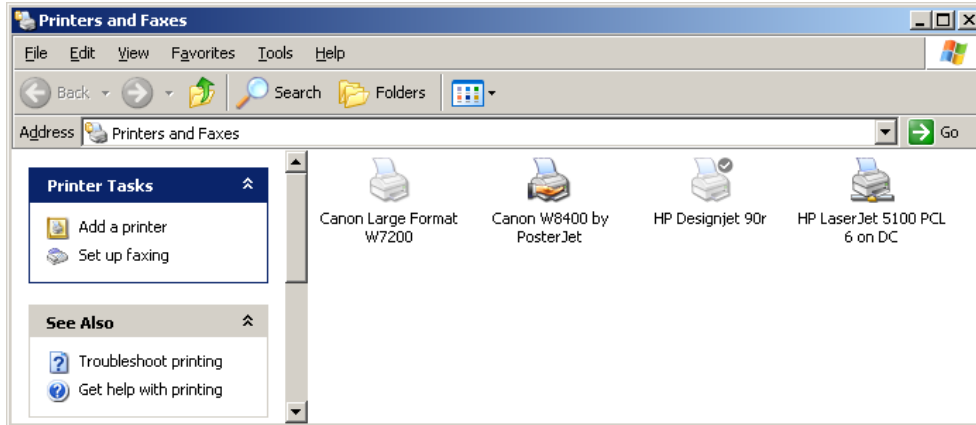
Necessary effective permissions for the shared printer.

- Print
- Manage printers
- manage Documents
- Read Permissions

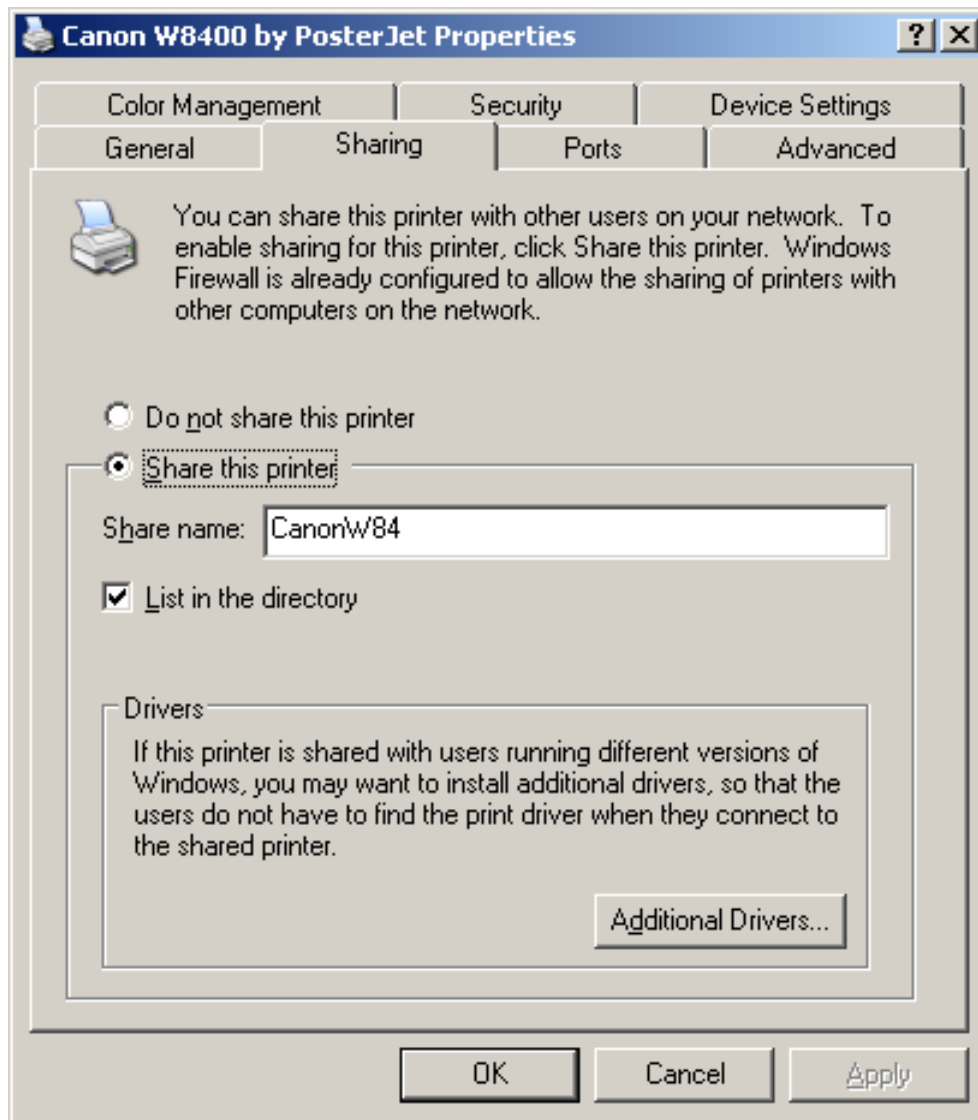
- Change Permissions
- Take Ownership

### Check Permissions for the shared printers

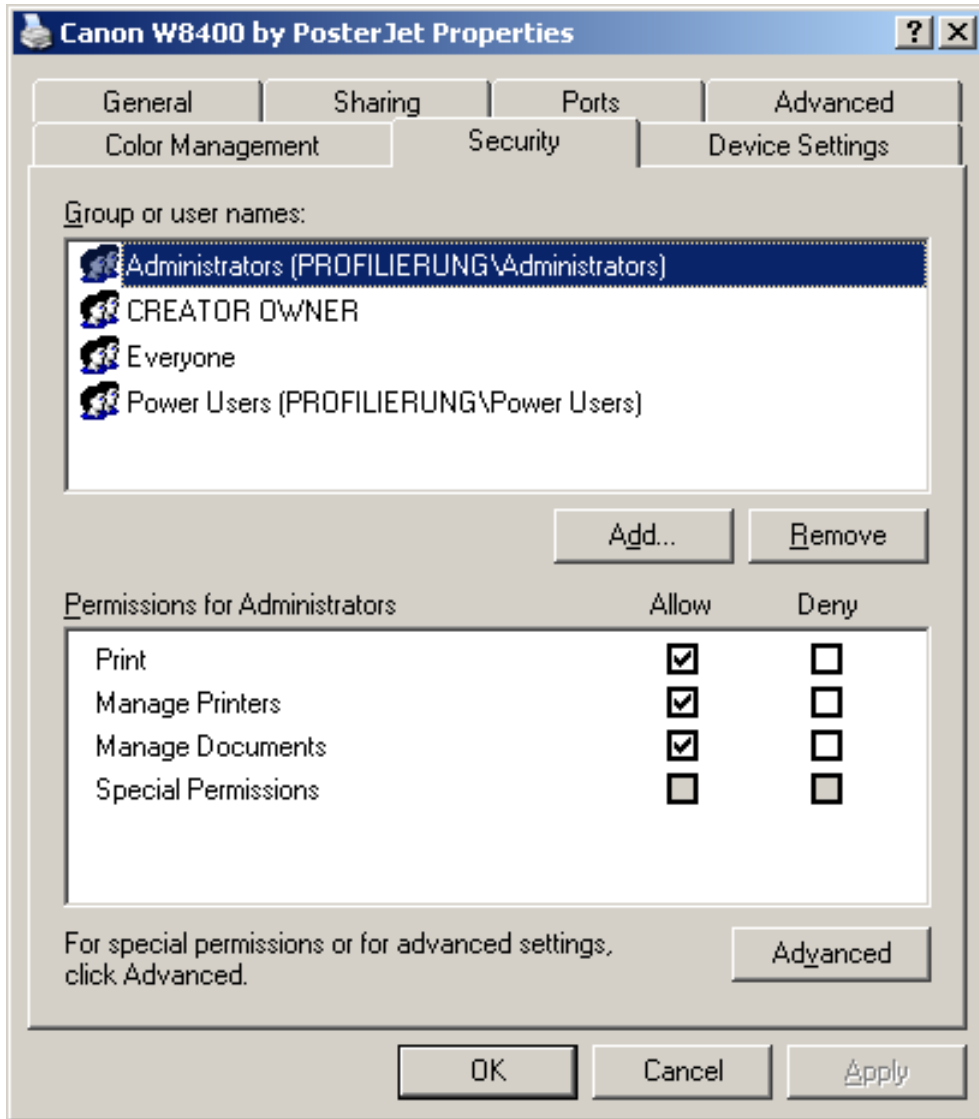
Open the entry "Printers and Faxes" from the Control Panel.



Open the properties of the shared printer via the context menu of the right mouse button.



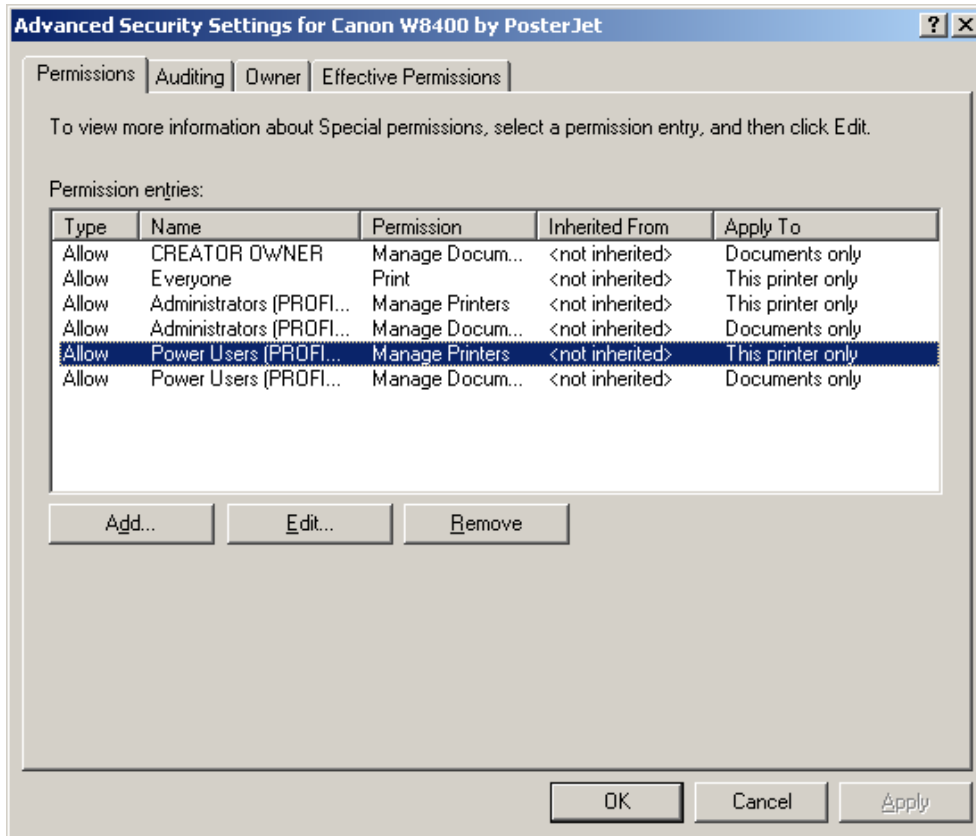
Click on the tab "Security".



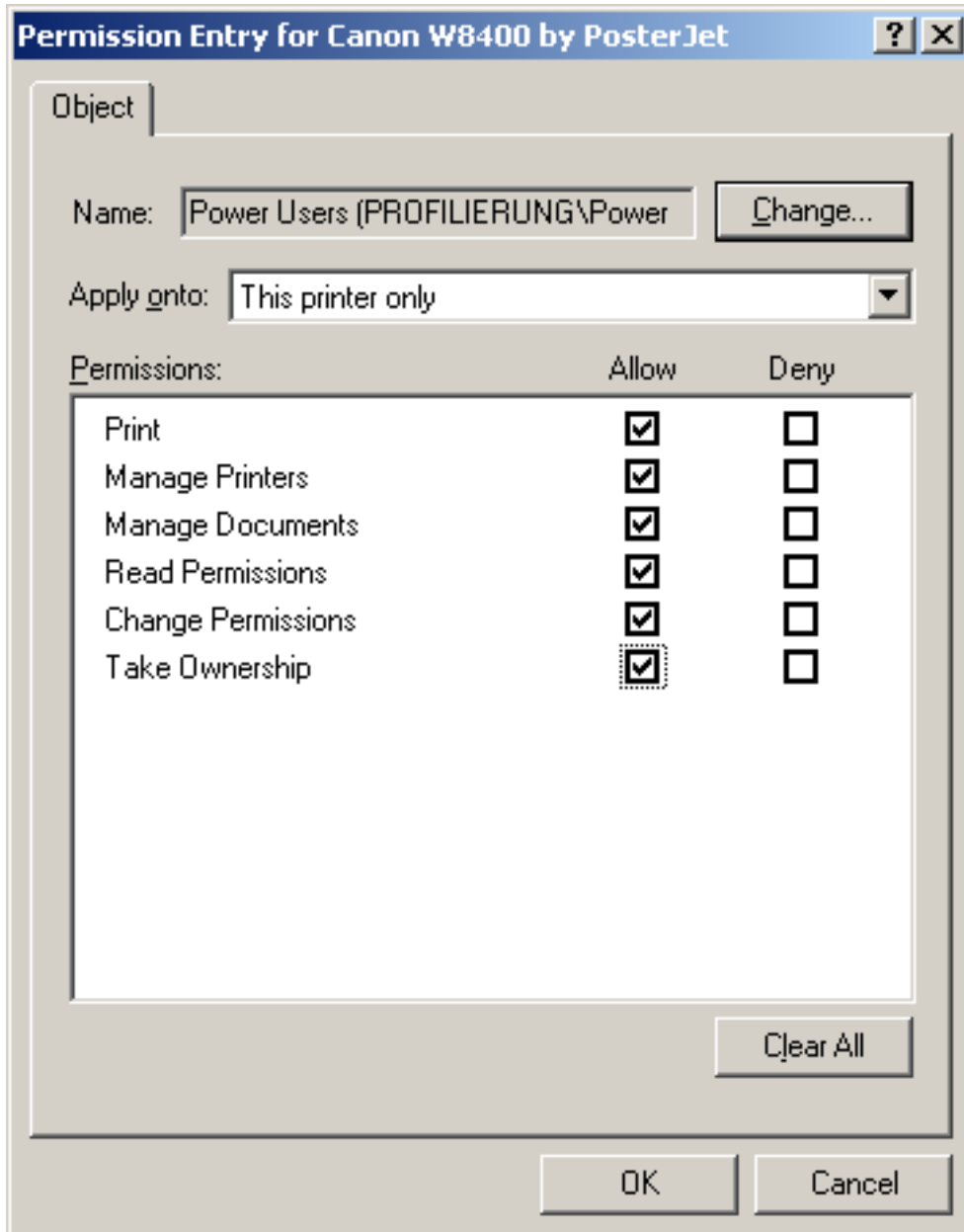
Click on the "Advanced" button.

The window "Advanced Security Settings for..." the shared printer appears.

Double click on the desired user.



The window "Permission entry for..." the shared printer appears.



In this example the user obtains the necessary permissions.

If the desired user does not obtain the necessary permissions, you must assign these permissions to the user.