

PPD Setup

PosterJet® 7

PPD Setup

Not every large format print requires the full range of functionality of PosterJet®. It can be easier to simply print from an application without saving the file and then having to switch to PosterJet®.

For this purpose, PosterJet® offers access to the most important RIP functions via so-called PPD files (PostScript Printer Description). These PPDs are selected from within a application, similarly to a printer, and can be accessed via the extended print options on PosterJet® functions.

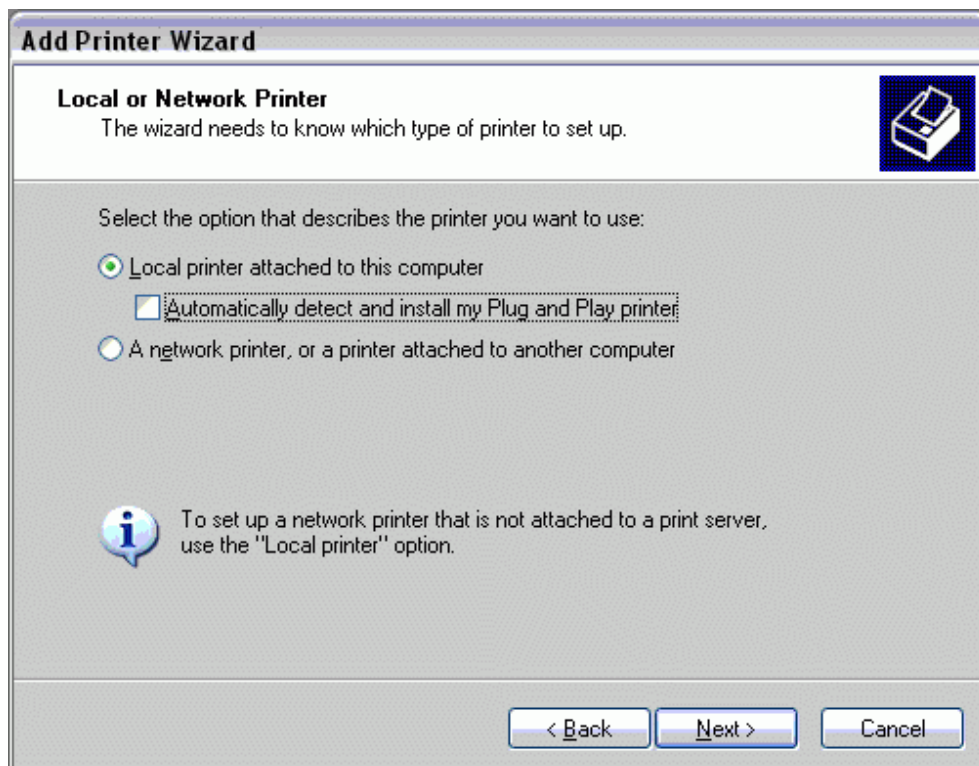
- [Installation of PPD files on the server](#)
- [Installation of PPD files on the network computers](#)

Installation of PPD files on the server

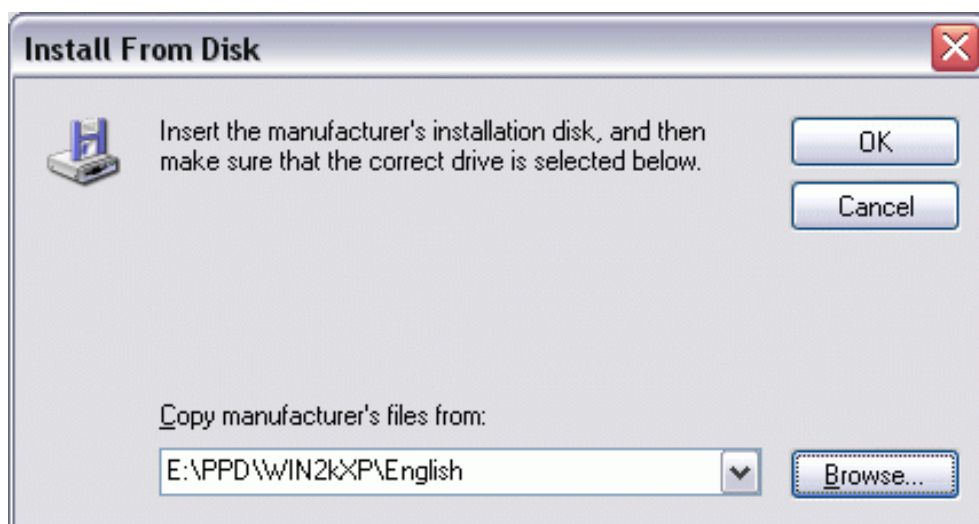
On Windows operating systems, this is performed by setting up the Windows printer driver. To do this, access the Windows assistant for installation and setup of the printer.

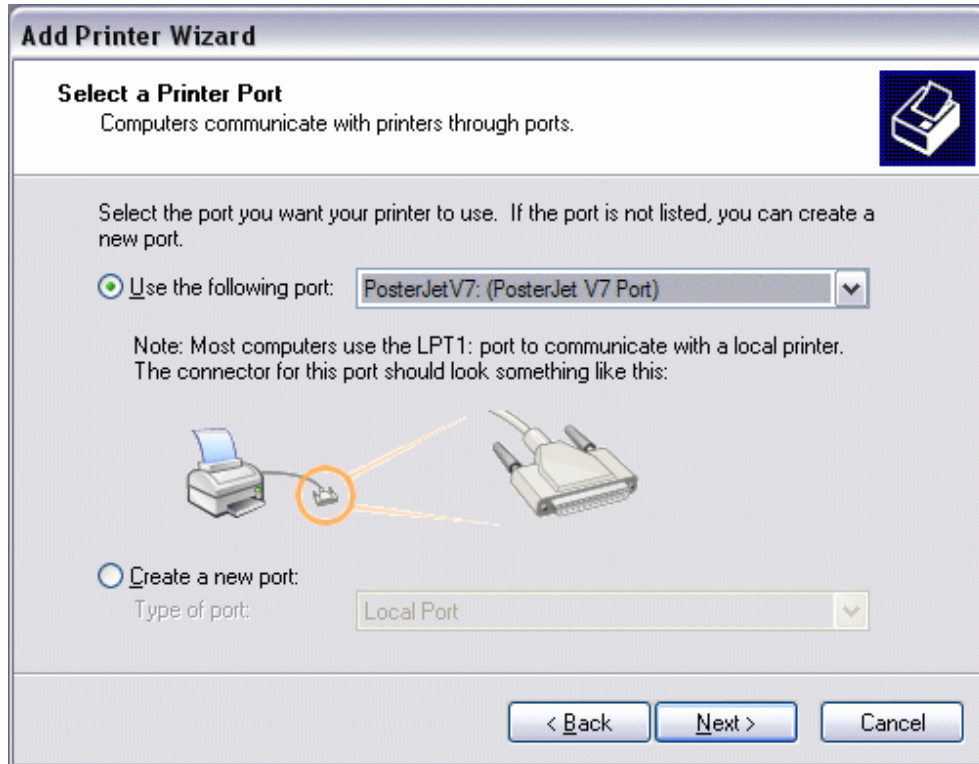
The installation is very similar for all the latest Windows versions; for example, here, you will find the installation under Windows XP Professional.

First click on Start/Settings/Printer and fax devices. By choosing "Add Printer", start the assistant and select the "Local Printer" option; deactivate the automatic search for plug and play printers.



For the next query on the printer connection, select the PosterJet@ connection (PosterJet V7 Port).





In the "Install Printer Software" dialog, select the PosterJet® CD from "Data Media". From the PPD directory, select your operating system, the required language and then the PosterJet@.inf. file.

