

## PosterJet 7 - Firewall settings

The logo for PosterJet 7, featuring the text "PosterJet" in orange and "7" in a larger, bold orange font, set against a grey background with vertical stripes.

### PosterJet 7 - Firewall settings

The PosterJet Client and the PosterJet Server are communicating via the standard TCP/IP protocol. To enable such a communication (file upload to server etc.) a TCP/IP port is used by the application.

### Configuration problems that can be experienced

In the case a remote Client can not establish a connection to the server, even though the remote Server PC reacts to the PING command, a firewall is preventing the communication between both components through the TCP/IP port 80. Even with a successful initial connection between client and server, the user may have a problem when uploading templates or ICC profiles to the server.

Especially the XP Service Pack 2 may create problems, when trying to access the PosterJet Server remotely.

### Standard TCP/IP port used by PosterJet

When PosterJet is installed with the PosterJet Server Hosting or the Microsoft Internet Information Server port 80 is used in most cases. The port can be changed by the user, in case he wishes to enable communication via a different port. Any firewall that could prevent the communication via this port has to be configured in order to allow file transfer (upload of ICC profiles from Client to Server, upload of jobs, upload of templates etc.).

PosterJet was developed to allow communication via any user selected TCP/IP port, but we recommend to use port 80.

### Changing the port for the PosterJet Server Hosting

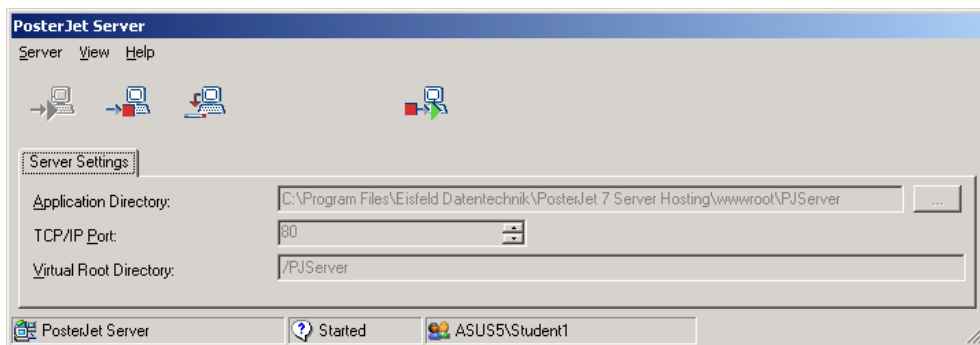
Make sure the PosterJet Server Hosting is running, otherwise start the application:

```
C:\Program files\Eisfeld Datentechnik\PosterJet 7 Server  
Hosting\Eisfeld.PosterJet.Server.Hosting.UI.exe
```

Click with the right mouse button on the Server symbol in the Windows task bar.



Click on "Maximize".



Stop the PosterJet Server with the "Stop" button. Set the required TCP/IP port. Restart the Server application with the "Start" button. The changes will now be active.

### **Changing the port for the Windows Internet Information Server (IIS)**

The communication port is automatically set by the IIS (normally to port 80). To change the port please read the Microsoft help.