

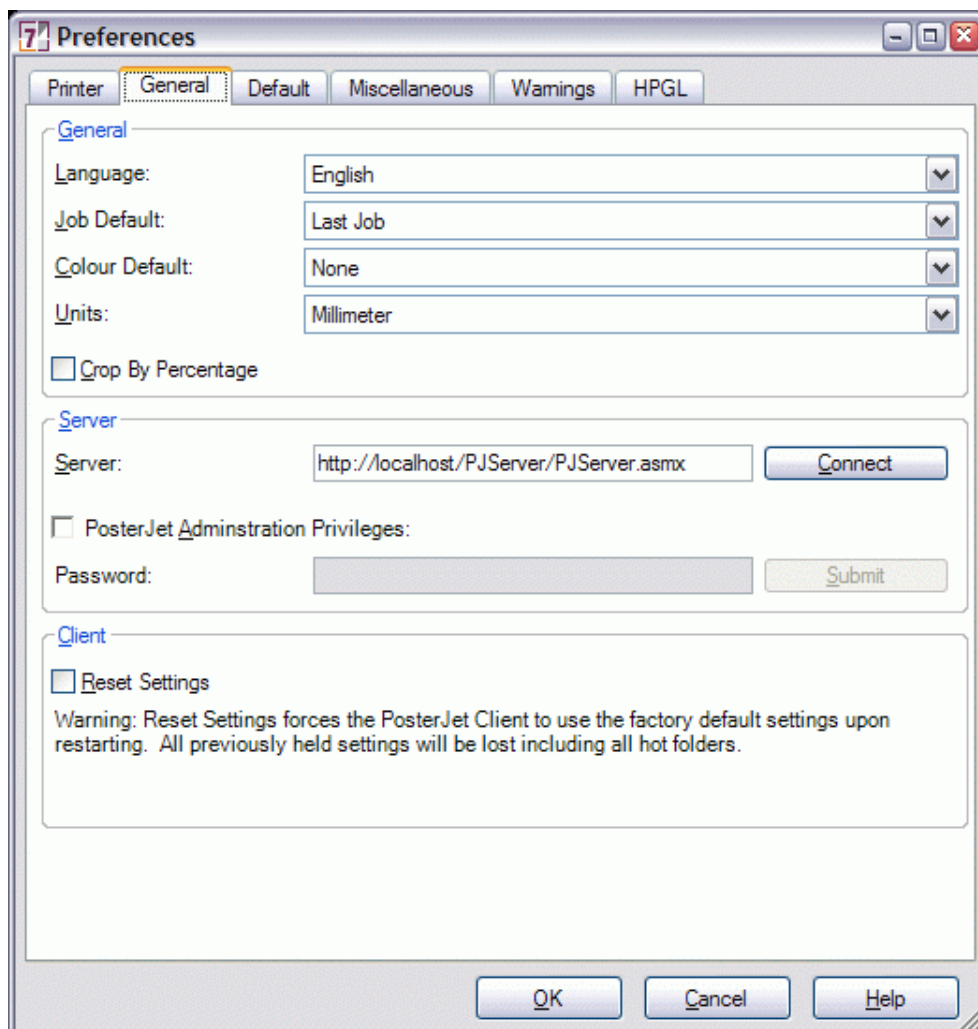
PosterJet configuration

PosterJet® 7

PosterJet configuration

Following the first start of PosterJet®, you must still perform some settings so that you can start printing. A PosterJet® workstation must know which IP address is assigned to the server or which printer is connected. The settings required are made in the PosterJet® Preferences. You can find the presets in the “File” menu of the PosterJet® main print queue.

Preferences - General



The screenshot shows the 'Preferences' dialog box with the 'General' tab selected. The dialog has a title bar with a '7' icon and standard window controls. Below the title bar are tabs for 'Printer', 'General', 'Default', 'Miscellaneous', 'Warnings', and 'HPGL'. The 'General' tab contains three sections: 'General', 'Server', and 'Client'. The 'General' section has four dropdown menus: 'Language' (English), 'Job Default' (Last Job), 'Colour Default' (None), and 'Units' (Millimeter). There is also an unchecked checkbox for 'Crop By Percentage'. The 'Server' section has a text field for 'Server' containing 'http://localhost/PJServer/PJServer.asmx' and a 'Connect' button. Below it is an unchecked checkbox for 'PosterJet Administration Privileges' and a 'Password' field with a 'Submit' button. The 'Client' section has an unchecked checkbox for 'Reset Settings' and a warning message: 'Warning: Reset Settings forces the PosterJet Client to use the factory default settings upon restarting. All previously held settings will be lost including all hot folders.' At the bottom of the dialog are 'OK', 'Cancel', and 'Help' buttons.

“General” section

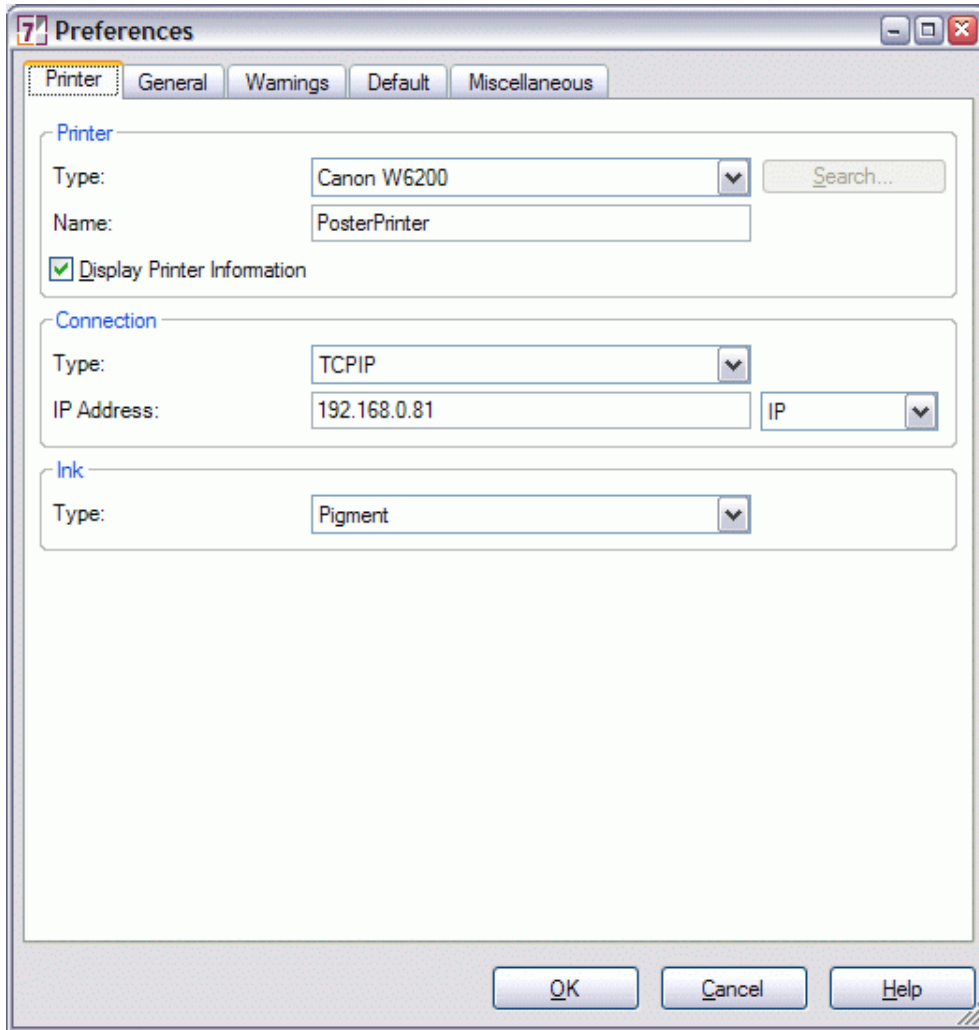
- “Language:”
Drop-down menu with a list of available user languages (the installation language is preset).

- "Job Default: "
 - Drop-down menu with a list of available job defaults, define how the print jobs should be printed at a later date. You have the choice between:
 - "Factory Settings: "
 - The preset job options are used during the installation.
 - "Previous Job: "
 - The job options of the previously processed job.
 - "List of all user-stored Job Templates"
 - Displays all available or saved job presets. If you didn't store any self created job templates, this dropdown contains just the two entries "Factory settings" and "Previous job".
- "Color Defaults: "
 - Drop-down menu with a list of available color presets (PJ Maximum Gamut Photo Imaging, PJ Euro Proofing, etc.).
- "Units: "
 - Drop-down menu with a list of available formats for the measuring units (inches or mm).

"Server" section

- "Server"
 - Normally the default-location is displayed and must not be changed. If the PosterJet-Server is installed on an other computer enter the location of the PosterJet® server in this field. Normally this is the IP-adress of the PosterJet 7 - server-computer. The entry "Server:" will for example change from "http://localhost/PJServer/PJServer.asmx" to "http://192.168.0.7/PJServer/PJServer.asmx".
- "Connect" button
 - This button connects you automatically to the PosterJet® server that you entered in "Server".
- "PosterJet Administration Privileges: "
 - If this checkbox is activated, the "Password" is activated.
- "Password"
 - Enter the administrator password here.
- "Submit" button
 - If you entered the correct password, this button will give you administrator rights. You can now make basic changes in the "Printer Setup", "Printer Connection" fields, etc.

Preferences - Printer



“Printer” section

- “Type”
Drop-down menu with a list of available/installed printers
- “Search...” button
Starts a search query for printers of the chosen type. If a printer of the chosen type is found, its connection address is used.
- “Name:”
In this field, you can rename a selected/installed printer (e.g. for easier identification of the printer in the network)

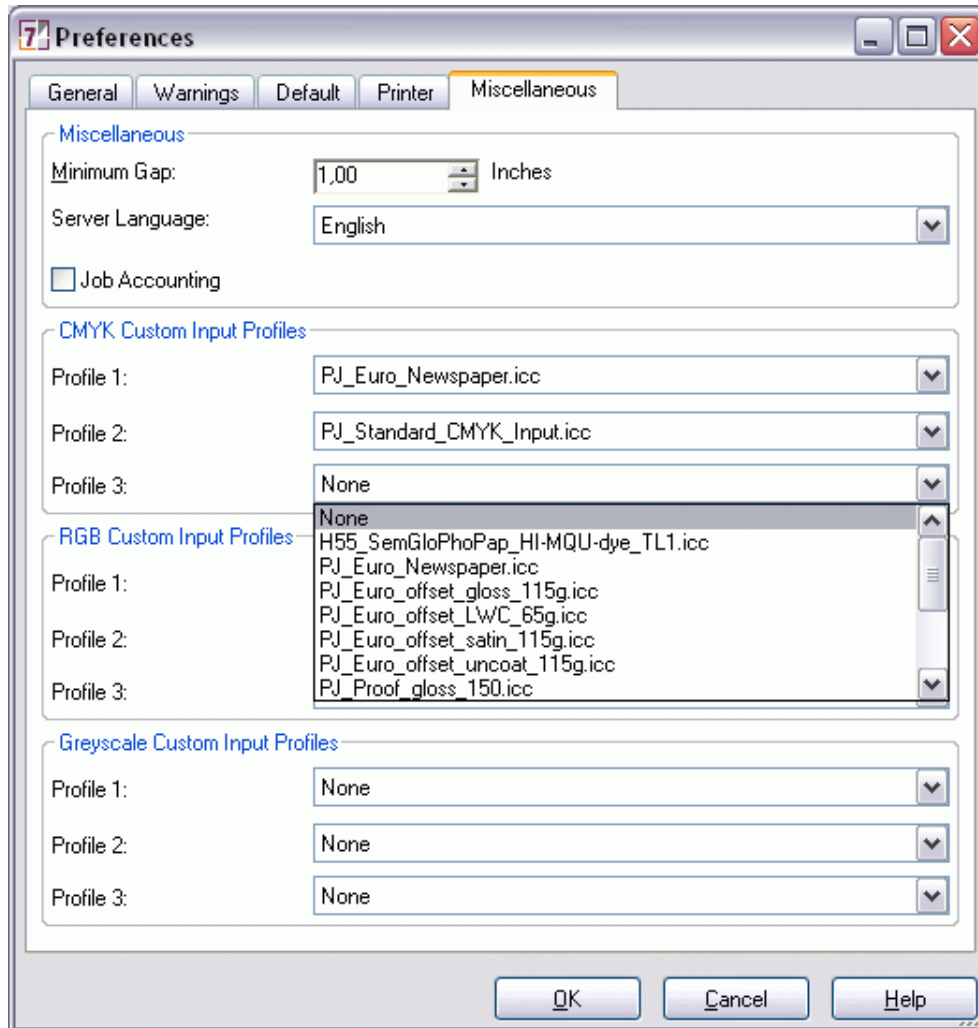
“Connection” section

- “Type”
Drop-down menu with a list of available connection types (TCP/IP, USB, FireWire, etc.) for the selected/installed printer (this list is printer-specific)
- “Connect”
In this field you enter the values corresponding to the following drop down menu (e.g.: if the connection type is “IP”, you enter the IP-address to this field).
- Connection type drop down menu
This drop down menu chooses the connection type (e.g. USB, IP etc.).

“Ink” section

- “Ink”
Drop-down menu with a list of available ink types for your selected/installed printer

Preferences - Miscellaneous



This tab is devoted to the user-defined profile settings. These settings are important, for example, when printing takes place via PPDs from an application into the PosterJet® print queue. When printing from an application, in addition to the standard defaults, you can also choose between the settings “User-Defined Profile 1” to “...3”. The settings made in the “Miscellaneous” tab presets can then be used.

“CMYK Custom Input Profile” section

- “Profile 1” to “Profile 3”
Drop-down menu with a list of available user-defined input profiles for the CMYK color space.

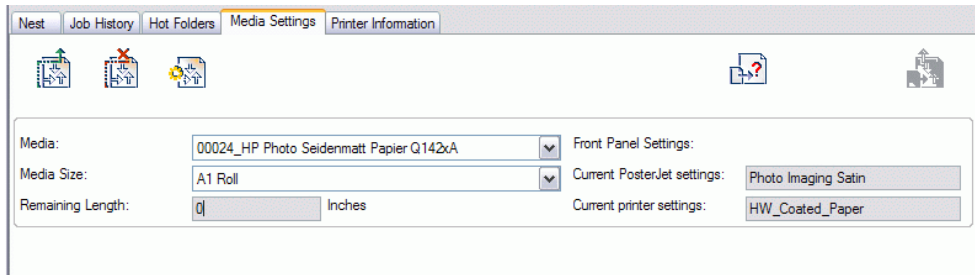
“RGB Custom Input Profile” section

- “Profile 1” to “Profile 3”
Drop-down menu with a list of available user-defined input profiles for the RGB color space.

“Gray Scale Custom Input Profile” section

- “Profile 1” to “Profile 3”
Drop-down menu with a list of available user-defined input profiles for the gray scale color space.

Media settings



Perform the setting for the print media inserted in the “Media Settings” tab of the lower section of the PosterJet® main print queue.

The control panel settings inform you as to the recommended setting at the control panel of your large format printer, on which our media profiles have been measured. If you set a paper type on the printer (= a different Basic Profile) other than the one we recommend, the print result can deviate strongly from the desired print result (as you have forced an incorrect profile calculation in PosterJet® using a different setting on the printer). You now know all about the PosterJet® 7 presets. Ideally, however, you will only need to set the right connection to the printer and the PosterJet® 7 server and the correct media settings.

Important:

Make sure that the frontpanel settings on the printer match the current PosterJet® settings

In the chapter "Front Panel Settings" of the tab "Media Settings" (lower queue in the main program window) two settings are displayed. The field "Current PosterJet setting" shows the setting according to the chosen media. The field "Current Printer setting" displays the current setting on the printers front panel.

In order to produce a proper print result, the frontpanel setting on the printer has to match the current PosterJet setting. Please adjust the printer frontpanel setting to the correct mediaprofil!